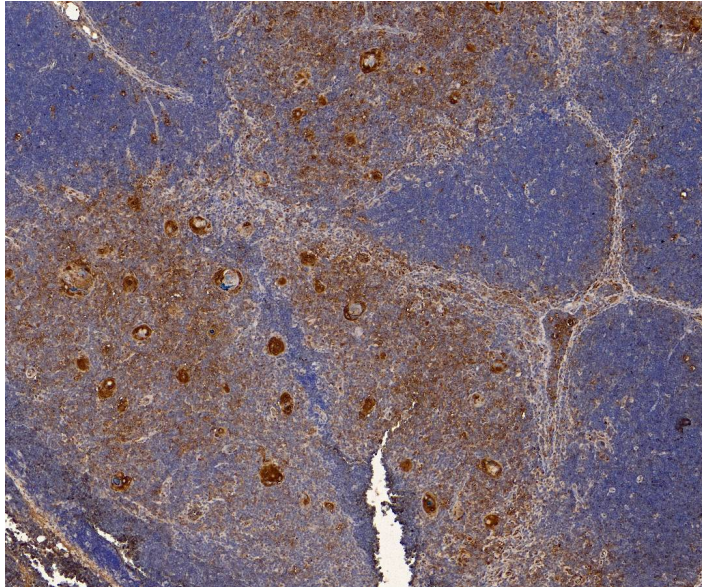




GOAT ANTI-CCR2 ANTIBODY

SKU: EB07239



SPECIFICATIONS

Formulation Supplied at 0.5 mg/ml in Tris saline, 0.02% sodium azide, pH7.3 with 0.5% bovine serum albumin.

Unit Size 100 µg

Storage Instructions Aliquot and store at -20°C. Minimize freezing and thawing.

Synonym / Alias Names monocyte chemotactic protein 1 receptor|monocyte chemoattractant protein 1 receptor|chemokine (C-C) receptor 2|MCP-1 receptor|MCP-1-R|CMKBR2|CKR2B|CKR2A|CKR2|CCR2B|CCR2A|CC-CKR-2|HGNC:1603|chemokine (C-C motif) receptor 2

Usage Summary **Immunofluorescence:** Strong expression of the protein seen in the membranes and cytoplasm of THP-1 cells. Recommended concentration: 10µg/ml. **Flow Cytometry:** Flow cytometric analysis of THP-1 cells. Recommended concentration: 10ug/ml.

Accession ID NP_000638.1; NP_000639.1

Blocking Peptide EBP07239

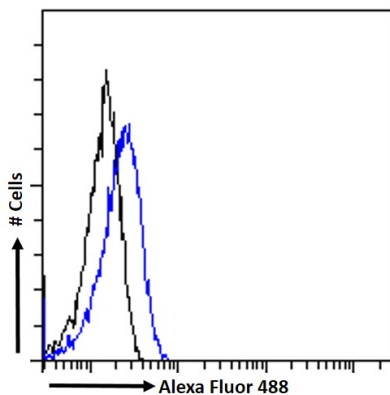
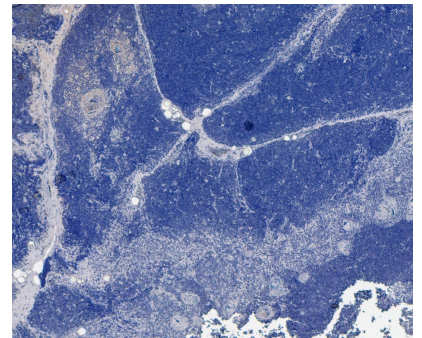
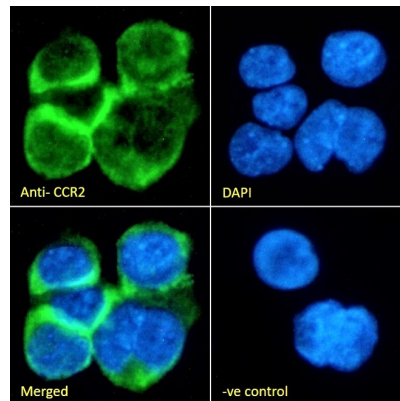
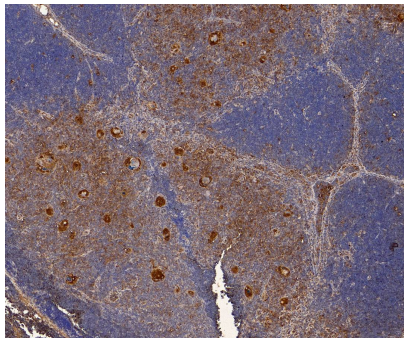
Immunogen Peptide with sequence RFIRNTNESGEEVT-C, from the N Terminus of the protein sequence according to NP_000638.1; NP_000639.1.

Product Comments This antibody is expected to recognise both reported isoforms (NP_000638.1 and NP_000639.1).



Peptide Sequence	RFIRNTNESGEEVT-C
Purification Method	Purified from goat serum by ammonium sulphate precipitation followed by antigen affinity chromatography using the immunizing peptide.
Shipping Instructions	Refrigerated
Predicted Species	Human
Reactive Species	Human
Human Gene ID	1231
Product Grade	https://prod-vector-labs-pimcore-assets.s3.us-east-1.amazonaws.com/assets/products/image/elite_medium.png
IHC Results	Paraffin embedded Human Tonsil. Recommended concentration: 6µg/ml.
ELISA	
Detection Limit	Antibody detection limit dilution 1:16000.
Application Type	Pep-ELISA, IF, IHC, FC

GALLERY IMAGES





www.everestbiotech.com

Email: customerservice@vectorlabs.com

Telephone: [\(650\) 697-3600](tel:(650)697-3600)