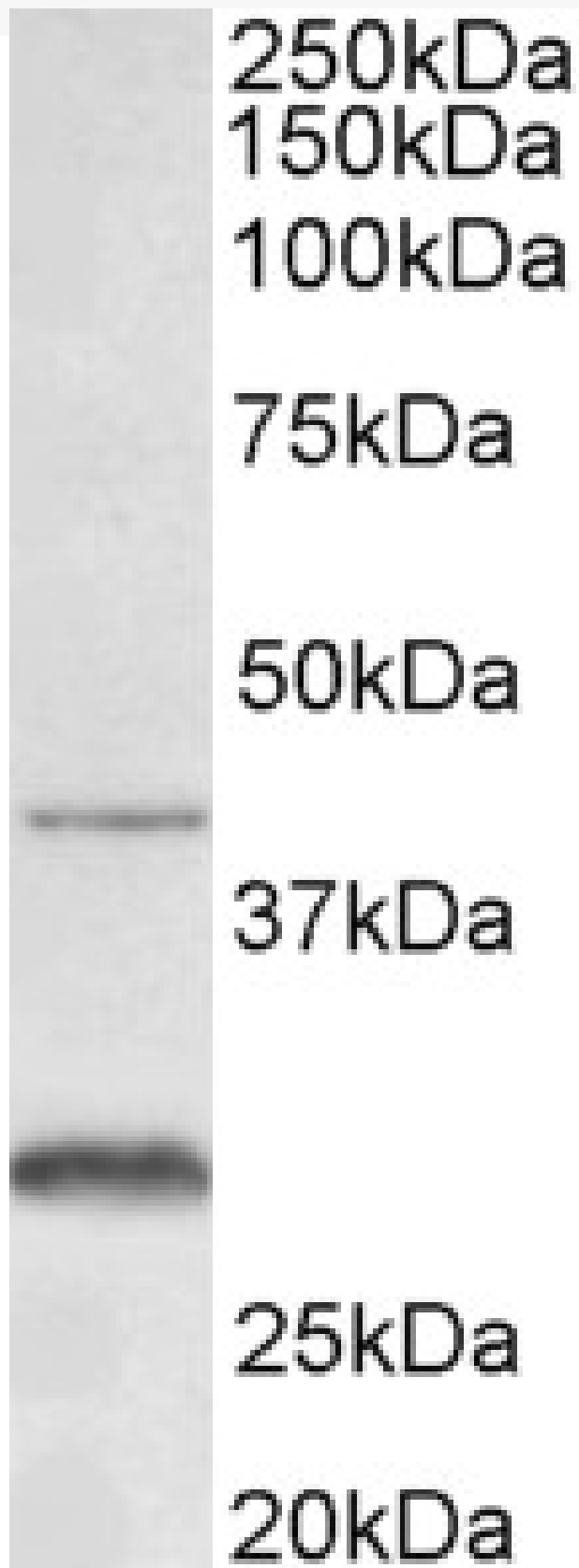


GOAT ANTI-CD128 / CXCR2 (MOUSE) ANTIBODY

SKU: EB11362



SPECIFICATIONS

Formulation	Supplied at 0.5 mg/ml in Tris saline, 0.02% sodium azide, pH7.3 with 0.5% bovine serum albumin.
Unit Size	100 µg
Storage Instructions	Aliquot and store at -20°C. Minimize freezing and thawing.
Synonym / Alias Names	Cxcr2 mLIL-8RH interleukin-8 receptor type B interleukin 8 receptor, beta IL-8Rh IL-8rb IL8rb IL8RA IL-8R B IL-8 receptor alpha chain high affinity interleukin-8 receptor B GRO/MGSA receptor Gpcr16 CXC-R2 CXCR-2 C-X-C chemokine receptor type 2 Cmkar2 chemokine (C-X-C) receptor 2 chemokine (C-X-C motif) receptor 2 CDw128 CD128
Accession ID	NP_034039.1
Blocking Peptide	EBP11362
Immunogen	Peptide with sequence EFKVDKFNIED-C, from the N Terminus of the protein sequence according to NP_034039.1.
Product Comments	Reported isoforms represent identical protein: NP_001548.1, NP_001161770.1. The immunizing peptide represent part of an extracellular domain.
Peptide Sequence	EFKVDKFNIED-C
Purification Method	Purified from goat serum by ammonium sulphate precipitation followed by antigen affinity chromatography using the immunizing peptide.
Shipping Instructions	Refrigerated
Predicted Species	Mouse
Reactive Species	Mouse
Human Gene ID	3579
Product Grade	https://prod-vector-labs-pimcore-assets.s3.us-east-1.amazonaws.com/assets/products/image/elite_medium.png
ELISA Detection Limit	Antibody detection limit dilution 1:128000.
Western Blot	Approx 40kDa band observed in Mouse Colon lysates (calculated MW of 40.4kDa according to NP_034039.1). Recommended concentration: 0.3-1µg/ml. An additional band of unknown identity was also consistently observed at 28kDa. This band was successfully blocked by incubation with the immunizing peptide. We would appreciate any feedback from people in the field - have any such results been reported with other antibodies/lysates? Have any further splice variants/modified forms been reported?
Application Type	Pep-ELISA, WB

DOCUMENTS

- [Data Sheet](#)

GALLERY IMAGES

