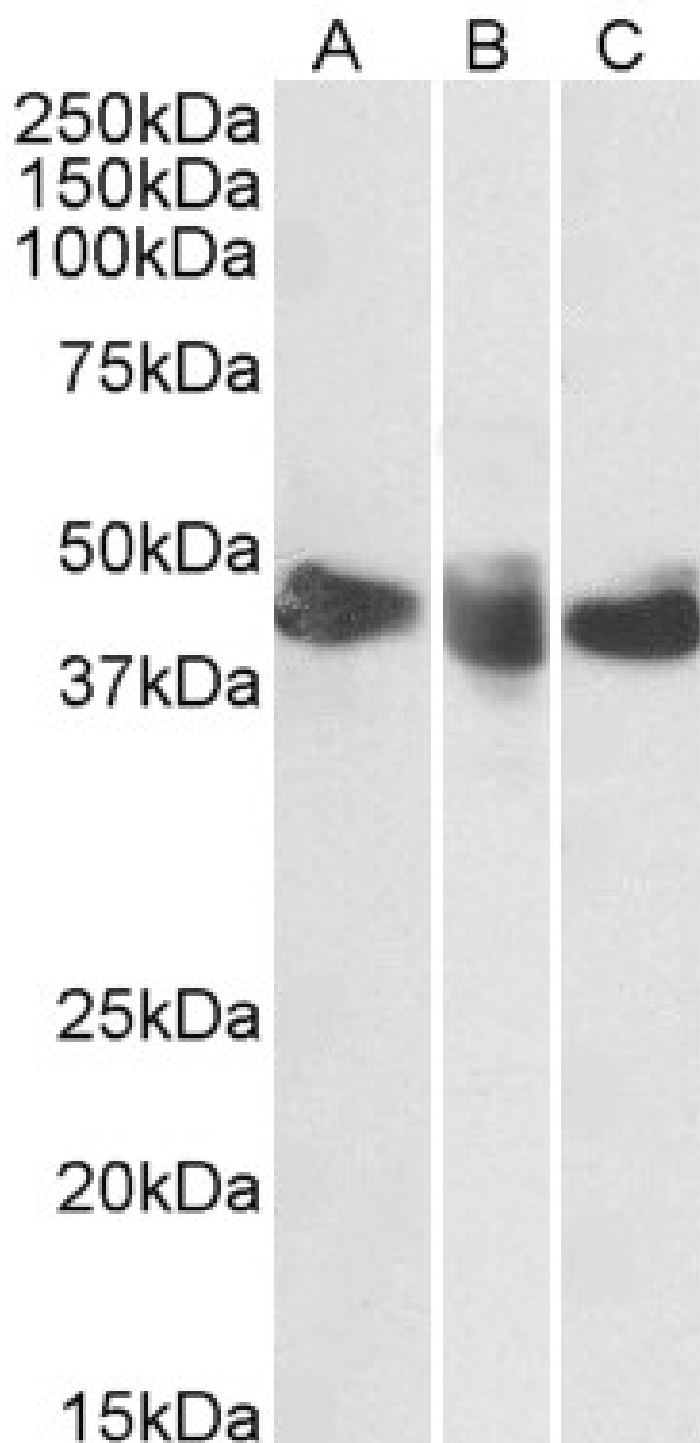


GOAT ANTI-CD27 (AA161-175) ANTIBODY

SKU: EB12536



SPECIFICATIONS

Formulation	Supplied at 0.5 mg/ml in Tris saline, 0.02% sodium azide, pH7.3 with 0.5% bovine serum albumin.
Unit Size	100 µg
Storage Instructions	Aliquot and store at -20°C. Minimize freezing and thawing.
Synonym / Alias Names	CD27 CD27 molecule S152 S152. LPFS2 T14 TNFRSF7 Tp55 CD27 antigen CD27L receptor T cell activation antigen S152 T-cell activation antigen CD27 tumor necrosis factor receptor superfamily, member 7
Accession ID	NP_001233.1
Blocking Peptide	EBP12536
Immunogen	Peptide with sequence C-QLADFRQLPARTLS, from the internal region of the protein sequence according to NP_001233.1.
Peptide Sequence	C-QLADFRQLPARTLS
Purification Method	Purified from goat serum by ammonium sulphate precipitation followed by antigen affinity chromatography using the immunizing peptide.
Shipping Instructions	Refrigerated
Predicted Species	Human
Reactive Species	Human
Human Gene ID	939
Product Grade	https://prod-vector-labs-pimcore-assets.s3.us-east-1.amazonaws.com/assets/products/image/elite_medium.png
ELISA	
Detection Limit	Antibody detection limit dilution 1:128000.
Western Blot	Approx 45kDa band observed in Human Spleen, Tonsil and Thymus lysates (calculated MW of 29.2kDa according to NP_001233.1). The observed molecular weight corresponds to the glycosylated form. Recommended concentration: 0.3-1µg/ml.
Application Type	Pep-ELISA, WB

DOCUMENTS

- [Data Sheet](#)

GALLERY IMAGES

