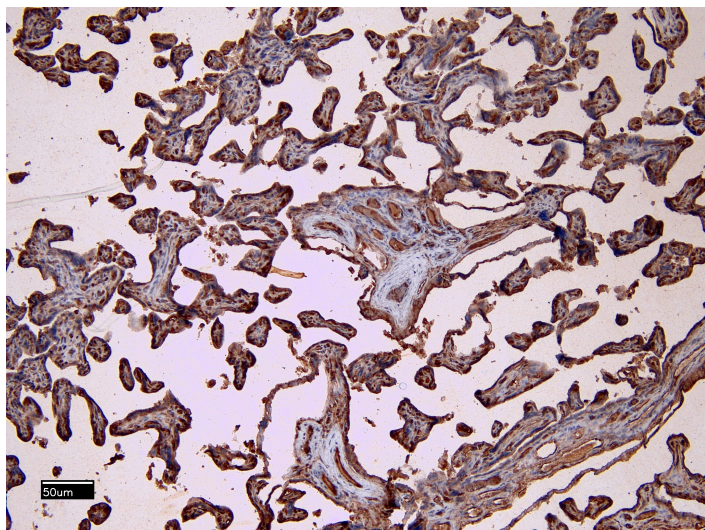


GOAT ANTI-CD32 / FCGR2B ANTIBODY

SKU: EB06695



SPECIFICATIONS

Formulation	Supplied at 0.5 mg/ml in Tris saline, 0.02% sodium azide, pH7.3 with 0.5% bovine serum albumin.
Unit Size	100 µg
Storage Instructions	Aliquot and store at -20°C. Minimize freezing and thawing.
Synonym / Alias Names	Fc fragment of IgG, low affinity IIb, receptor CD32B Fc fragment of IgG, low affinity IIb, receptor (CD32) Fc fragment of IgG, low affinity II, receptor for (CD32) Fc gamma RIb Fc fragment of IgG, low affinity IIb, receptor for (CD32) IGFR2 FCGR2 FCG2 CD32 FCGR2B
Usage Summary	<p>Immunofluorescence: Strong expression of the protein seen in the membranes of THP-1 cells.</p> <p>Flow Cytometry: Flow cytometric analysis of K562 cells. Recommended concentration: 10ug/ml.</p>
Accession ID	NP_003992.3; NP_001002273.1; NP_001002274.1; NP_001002275.1; NP_001177757.1
Blocking Peptide	EBP06695
Immunogen	Peptide with sequence C-PDALEEPDDQNRI, from the C Terminus of the protein sequence according to NP_003992.3; NP_001002273.1; NP_001002274.1; NP_001002275.1; NP_001177757.1.
Product Comments	This antibody is expected to recognise all reported isoforms (NP_001002273.1; NP_001002274.1; NP_001002275.1; NP_003992.3; NP_001177757.1).
Peptide Sequence	C-PDALEEPDDQNRI

Purification Method	Purified from goat serum by ammonium sulphate precipitation followed by antigen affinity chromatography using the immunizing peptide.
Shipping Instructions	Refrigerated
Predicted Species	Human
Reactive Species	Human
Human Gene ID	2213
Product Grade	https://prod-vector-labs-pimcore-assets.s3.us-east-1.amazonaws.com/assets/products/image/elite_plus_medium.png
IHC Results	Paraffin embedded Human Placenta. Recommended concentration: 6-8µg/ml.
ELISA Detection Limit	Antibody detection limit dilution 1:32000.
Western Blot	Approx. 38kDa band observed in Human Placenta lysates and in lysates of cell line Daudi, and also in preliminary testing of K562 cell lysate (calculated MW of 34.0kDa according to NP_003992.3). This molecular weight is routinely observed by other sources. Recommended concentration: 0.5-3µg/ml. Primary incubation 1 hour at room temperature.
Application Type	Pep-ELISA, WB, FC, IF, IHC

DOCUMENTS

- [Data Sheet](#)

GALLERY IMAGES

