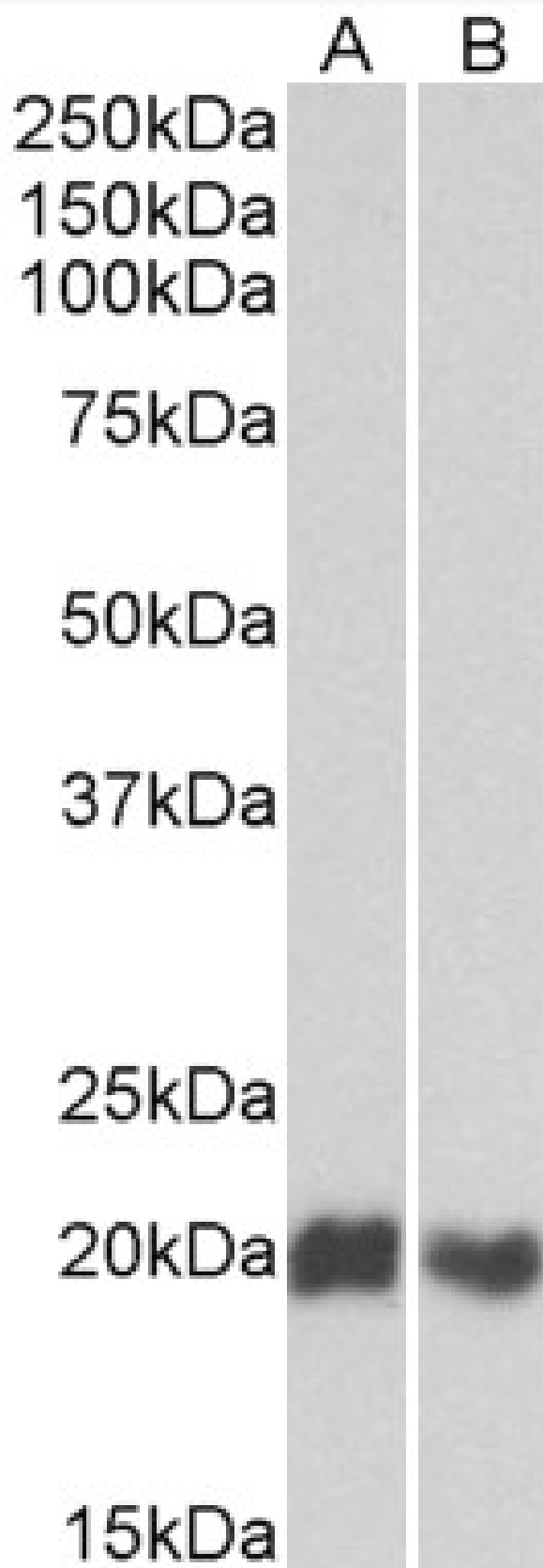


# GOAT ANTI-CD3D (ISOFORM A) ANTIBODY

**SKU:** EB12590



## SPECIFICATIONS

<b>Formulation</b>	Supplied at 0.5 mg/ml in Tris saline, 0.02% sodium azide, pH7.3 with 0.5% bovine serum albumin.
<b>Unit Size</b>	100 µg
<b>Storage Instructions</b>	Aliquot and store at -20°C. Minimize freezing and thawing.
<b>Synonym / Alias Names</b>	CD3D CD3d molecule, delta (CD3-TCR complex) CD3-DELTA IMD19 T3D CD3 antigen, delta subunit CD3 delta CD3d antigen, delta polypeptide (TiT3 complex) OKT3, delta chain T-cell receptor T3 delta chain T-cell surface glycoprotein CD3 delta chain
<b>Accession ID</b>	NP_000723.1
<b>Blocking Peptide</b>	EBP12590
<b>Immunogen</b>	Peptide with sequence C-HETGRLSGAADTQ, from the internal region of the protein sequence according to NP_000723.1.
<b>Product Comments</b>	This antibody is expected to recognize reported isoform A (NP_000723.1) only.
<b>Peptide Sequence</b>	C-HETGRLSGAADTQ
<b>Purification Method</b>	Purified from goat serum by ammonium sulphate precipitation followed by antigen affinity chromatography using the immunizing peptide.
<b>Shipping Instructions</b>	Refrigerated
<b>Predicted Species</b>	Human
<b>Reactive Species</b>	Human
<b>Human Gene ID</b>	915
<b>Product Grade</b>	<a href="https://prod-vector-labs-pimcore-assets.s3.us-east-1.amazonaws.com/assets/products/image/elite_medium.png">https://prod-vector-labs-pimcore-assets.s3.us-east-1.amazonaws.com/assets/products/image/elite_medium.png</a>
<b>ELISA Detection Limit</b>	Antibody detection limit dilution 1:128000.
<b>Western Blot</b>	Approx 20kDa band observed in lysates of cell lines Jurkat and Molt4 (calculated MW of 18.9kDa according to NP_000723.1). Recommended concentration: 1-3µg/ml.
<b>Application Type</b>	Pep-ELISA, WB

## DOCUMENTS

- [Data Sheet](#)

## GALLERY IMAGES

