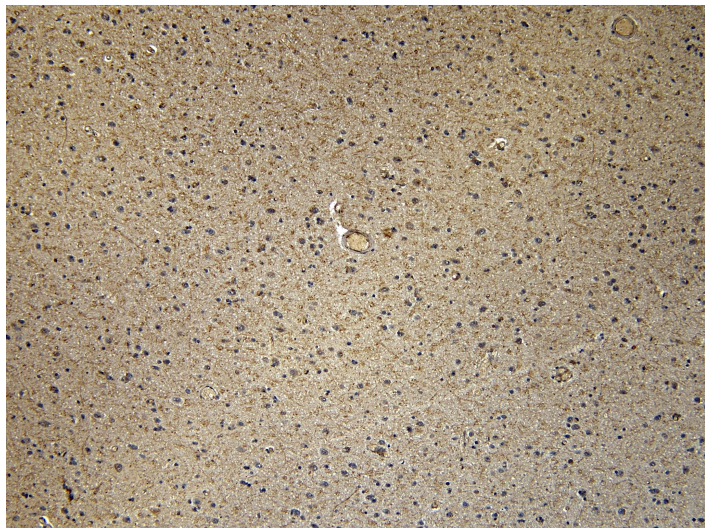


# GOAT ANTI-CD47 ANTIBODY

**SKU:** EB12501



## SPECIFICATIONS

**Formulation** Supplied at 0.5 mg/ml in Tris saline, 0.02% sodium azide, pH7.3 with 0.5% bovine serum albumin.

**Unit Size** 100 µg

**Storage Instructions** Aliquot and store at -20°C. Minimize freezing and thawing.

**Synonym / Alias Names** integrin associ|antigenic surface determinant protein OA3|antigen identified by monoclonal antibody 1D8|Rh-related antigen|CD47 glycoprotein|CD47 antigen (Rh-related antigen, integrin-associated signal transducer)|OA3|MER6|IAP|CD47 molecule|CD47

**Usage Summary** <strong>Immunofluorescence:</strong> Strong expression of the protein seen in the cytoplasm and membrane of A431 and THP-1 cells, and additionally in the nucleus of U2OS cells. Recommended concentration: 10µg/ml.

**Accession ID** NP\_001768.1; NP\_942088.1; NP\_001369235.1

**Blocking Peptide** EBP12501

**Immunogen** Peptide with sequence C-SNQKTIQPPRK, from the internal region (near C terminus) of the protein sequence according to NP\_001768.1; NP\_942088.1; NP\_001369235.1.

**Product Comments** This antibody; is expected to recognize all reported isoforms (NP\_001768.1; NP\_942088.1; NP\_001369235.1).

**Peptide Sequence** C-SNQKTIQPPRK

<b>Purification Method</b>	Purified from goat serum by ammonium sulphate precipitation followed by antigen affinity chromatography using the immunizing peptide.
<b>Shipping Instructions</b>	Refrigerated
<b>Predicted Species</b>	Human, Dog
<b>Reactive Species</b>	Human
<b>Human Gene ID</b>	961
<b>Product Grade</b>	<a href="https://prod-vector-labs-pimcore-assets.s3.us-east-1.amazonaws.com/assets/products/image/elite_medium.png">https://prod-vector-labs-pimcore-assets.s3.us-east-1.amazonaws.com/assets/products/image/elite_medium.png</a>
<b>IHC Results</b>	Paraffin embedded Human Brain (Cortex). Recommended concentration: 6-7µg/ml.
<b>ELISA</b>	
<b>Detection Limit</b>	Antibody detection limit dilution 1:128000.
<b>Application Type</b>	Pep-ELISA, IF, IHC

## DOCUMENTS

- [Data Sheet](#)

## GALLERY IMAGES

