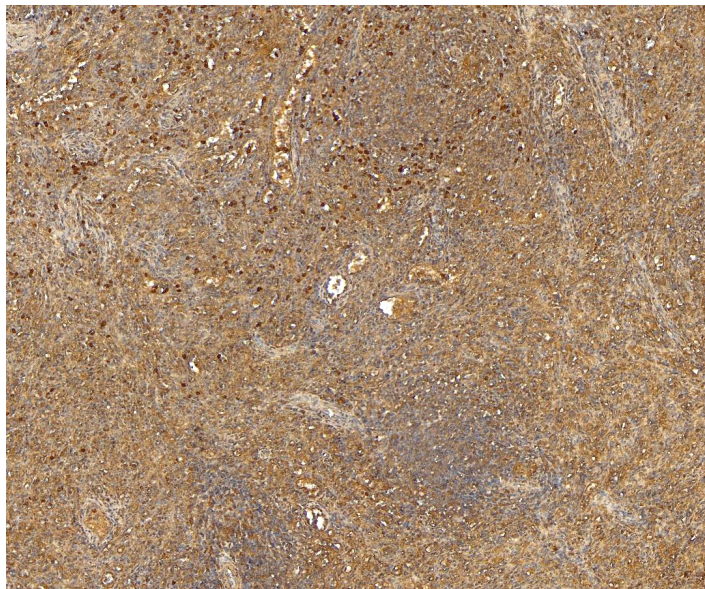


GOAT ANTI-CD68 ANTIBODY

SKU: EB12699



SPECIFICATIONS

Formulation	Supplied at 0.5 mg/ml in Tris saline, 0.02% sodium azide, pH7.3 with 0.5% bovine serum albumin.
Unit Size	100 µg
Storage Instructions	Aliquot and store at -20°C. Minimize freezing and thawing.
Synonym / Alias Names	scavenger receptor class D, member 1 macrosialin macrophage antigen CD68 CD68 antigen SCARD1 LAMP4 GP110 CD68 molecule CD68
Usage Summary	Flow Cytometry: Flow cytometric analysis of U937 cells. Recommended concentration: 10ug/ml.
Accession ID	NP_001242.2; NP_001035148.1
Blocking Peptide	EBP12699
Immunogen	Peptide with sequence PNKTKVQGSCEGAH, from the internal region of the protein sequence according to NP_001242.2; NP_001035148.1.
Product Comments	This antibody is expected to recognize both reported isoforms (NP_001242.2; NP_001035148.1).
Peptide Sequence	PNKTKVQGSCEGAH

Purification Method	Purified from goat serum by ammonium sulphate precipitation followed by antigen affinity chromatography using the immunizing peptide.
Shipping Instructions	Refrigerated
Predicted Species	Human
Reactive Species	Human
Human Gene ID	968
Product Grade	https://prod-vector-labs-pimcore-assets.s3.us-east-1.amazonaws.com/assets/products/image/elite_plus_medium.png
IHC Results	Paraffin embedded Human Spleen. Recommended concentration: 5-6µg/ml.
ELISA Detection Limit	Antibody detection limit dilution 1:128000.
Western Blot	Approx. 100-110kDa band observed in lysates of cell line U937 and in preliminary testing of THP-1 cell lysate (calculated MW of 37.4kDa according to NP_001242.2). The observed molecular weight is routinely reported, and corresponds to the glycosylated form. Recommended concentration: 1-3µg/ml. Primary incubation 1 hour at room temperature. Positive Control: A batch specific positive control lysate is available for this product. Please contact Sales@everestbiotech.com for availability.
Application Type	Pep-ELISA, WB, IHC, FC

DOCUMENTS

- [Data Sheet](#)

GALLERY IMAGES

