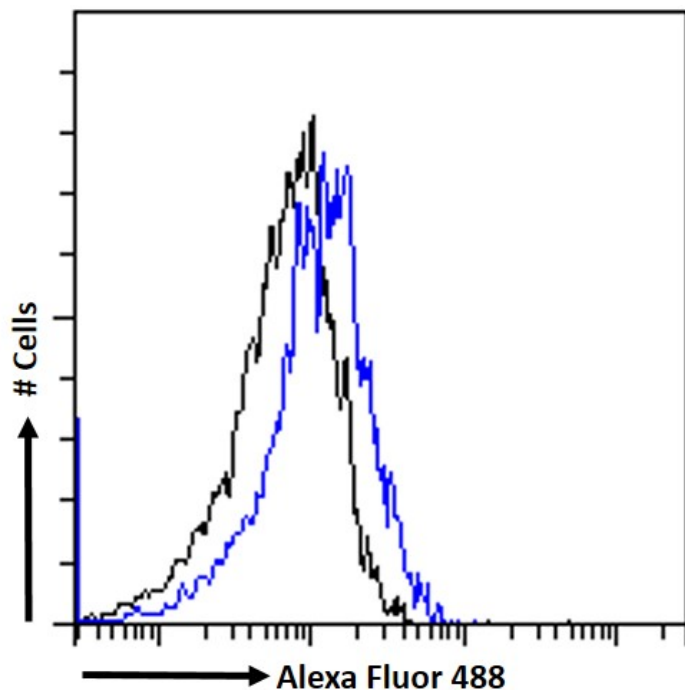


GOAT ANTI-CD74 (AA159-171) ANTIBODY

SKU: EB12551



SPECIFICATIONS

Formulation Supplied at 0.5 mg/ml in Tris saline, 0.02% sodium azide, pH7.3 with 0.5% bovine serum albumin.

Unit Size 100 µg

Storage Instructions Aliquot and store at -20°C. Minimize freezing and thawing.

Synonym / Alias Names gamma chain of class II antigens| MHC HLA-DR gamma chain| Ia-associated invariant chain| HLA-DR-gamma| CD74 antigen (invariant polypeptide of major histocompatibility complex, class II antigen-associated)| CD74 antigen| CD74 molecule, major histocompatibility complex, class II invariant chain| Ia-GAMMA| HLADG| DHLAG|CD74

Usage Summary

<p>Flow Cytometry: Flow cytometric analysis of Caco--2 cells. Recommended concentration: 10ug/ml.</p>

Accession ID NP_001020330.1; NP_004346.1; NP_001351012.1; : NP_001351013.1

Blocking Peptide EBP12551

Immunogen	Peptide with sequence C-KGSFPENLRHLKN, from the internal region of the protein sequence according to NP_001020330.1; NP_004346.1; NP_001351012.1; : NP_001351013.1.
Product Comments	This antibody is expected to recognize all reported isoforms.
Peptide Sequence	C-KGSFPENLRHLKN
Purification Method	Purified from goat serum by ammonium sulphate precipitation followed by antigen affinity chromatography using the immunizing peptide.
Shipping Instructions	Refrigerated
Predicted Species	Human
Reactive Species	Human
Human Gene ID	972
Product Grade	https://prod-vector-labs-pimcore-assets.s3.us-east-1.amazonaws.com/assets/products/image/elite_medium.png
IHC Results	Paraffin embedded Human Spleen. Recommended concentration: 5µg/ml
ELISA Detection Limit	Antibody detection limit dilution 1:128000.
Western Blot	This antibody was observed to recognize variations of bands at approx. 26kDa, 30kDa, 35kDa and 70kDa in Human Duodenum and Lung lysates (calculated MW of 26.4kDa according to NP_004346.1 and 33.5kDa according to NP_001020330.1. All bands were blocked by incubation with the immunizing peptide and have been observed by other commercial sources. Recommended concentration: 0.5-1µg/ml. Primary incubation 1 hour at room temperature.
Application Type	Pep-ELISA, WB, IHC, FC

DOCUMENTS

- [Data Sheet](#)

GALLERY IMAGES

