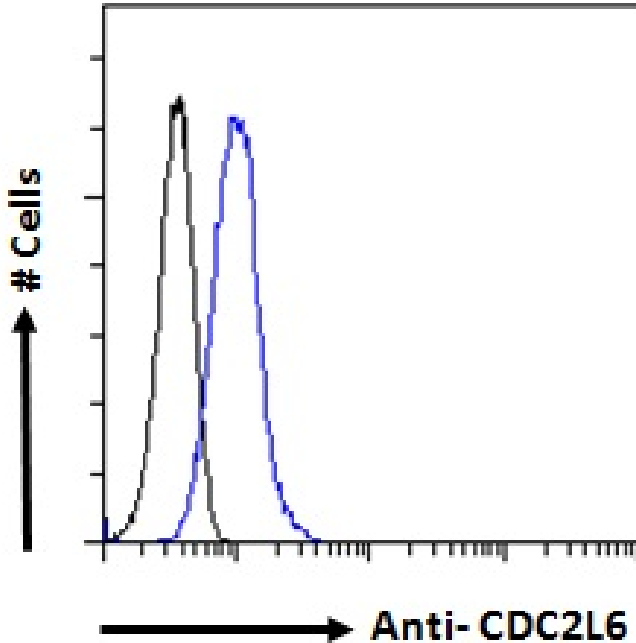


GOAT ANTI-CDC2L6 ANTIBODY

SKU: EB10476



SPECIFICATIONS

Formulation Supplied at 0.5 mg/ml in Tris saline, 0.02% sodium azide, pH7.3 with 0.5% bovine serum albumin.

Unit Size 100 µg

Storage Instructions Aliquot and store at -20°C. Minimize freezing and thawing.

Synonym / Alias Names CDC2L6|KIAA1028|death-preventing kinase|cyclin-dependent kinase (CDC2-like) 11|cell division cycle 2-like 6 (CDK8-like)|CDK8-like cyclin-dependent kinase|CDK11|bA346C16.3

Usage Summary **Immunofluorescence:** Strong expression of the protein seen in the vesicles of HeLa cells. Recommended concentration: 10µg/ml. **Flow Cytometry:** Flow cytometric analysis of HeLa cells. Recommended concentration: 10ug/ml.

Accession ID NP_055891.1; NP_001287889.1; NP_001287892.1

Blocking Peptide EBP10476

Immunogen Peptide with sequence C-QYHPSHQHR, from the C Terminus of the protein sequence according to NP_055891.1; NP_001287889.1; NP_001287892.1.

Peptide Sequence	C-QYHPSHQAHR
Purification Method	Purified from goat serum by ammonium sulphate precipitation followed by antigen affinity chromatography using the immunizing peptide.
Shipping Instructions	Refrigerated
Predicted Species	Human, Mouse, Rat, Dog, Cow
Reactive Species	Human
Human Gene ID	23097
Mouse Gene ID	78334
Rat Gene ID	309804
Product Grade	https://prod-vector-labs-pimcore-assets.s3.us-east-1.amazonaws.com/assets/products/image/elite_medium.png
ELISA Detection Limit	Antibody detection limit dilution 1:8000.
Application Type	Pep-ELISA, IF, FC

DOCUMENTS

- [Data Sheet](#)

GALLERY IMAGES

