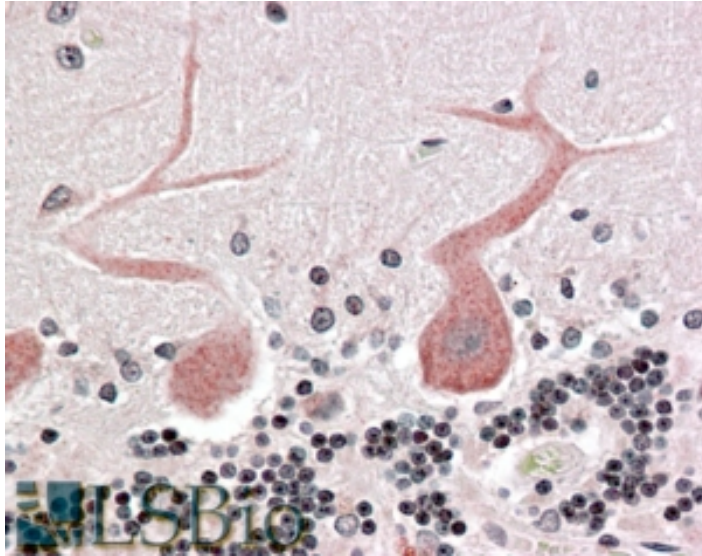




GOAT ANTI-CDC42-BINDING KINASE ALPHA ANTIBODY

SKU: EB06363



SPECIFICATIONS

Formulation Supplied at 0.5 mg/ml in Tris saline, 0.02% sodium azide, pH7.3 with 0.5% bovine serum albumin.

Unit Size 100 µg

Storage Instructions Aliquot and store at -20°C. Minimize freezing and thawing.

Synonym / Alias Names CDC42 binding protein kinase beta|DKFZp686L1738|Ser-Thr protein kinase related to the myotonic dystrophy protein kinase|myotonic dystrophy kinase-related CDC42-binding protein kinase alpha|ser-thr protein kinase PK428|CDC42 binding protein kinase alpha (DMPK-like)|KIAA0451|FLJ23347|PK428|MRCKA|MRCK|CDC42BPA

Accession ID NP_055641.3; NP_003598.2

Blocking Peptide EBP06363

Immunogen Peptide with sequence SGEVRLRQLEQFI-C, from the N Terminus of the protein sequence according to NP_055641.3; NP_003598.2.

Product Comments This antibody is expected to recognise both reported Human isoforms (NP_055641.3 and NP_003598.2).

Peptide Sequence SGEVRLRQLEQFI-C

Purification Method Purified from goat serum by ammonium sulphate precipitation followed by antigen affinity chromatography using the immunizing peptide.



Shipping Instructions	Refrigerated
Predicted Species	Human, Mouse, Rat, Dog, Cow
Reactive Species	Human
Human Gene ID	8476
Mouse Gene ID	226751
Rat Gene ID	114116
Product Grade	https://prod-vector-labs-pimcore-assets.s3.us-east-1.amazonaws.com/assets/products/image/elite_medium.png
IHC Results	Paraffin embedded Human Brain (Cerebellum) and Small Intestine (submucosal plexus). Recommended concentration: 3.75µg/ml.
ELISA	
Detection Limit	Antibody detection limit dilution 1:16000.
Application Type	Pep-ELISA, IHC

DOCUMENTS

- [Data Sheet](#)

GALLERY IMAGES

