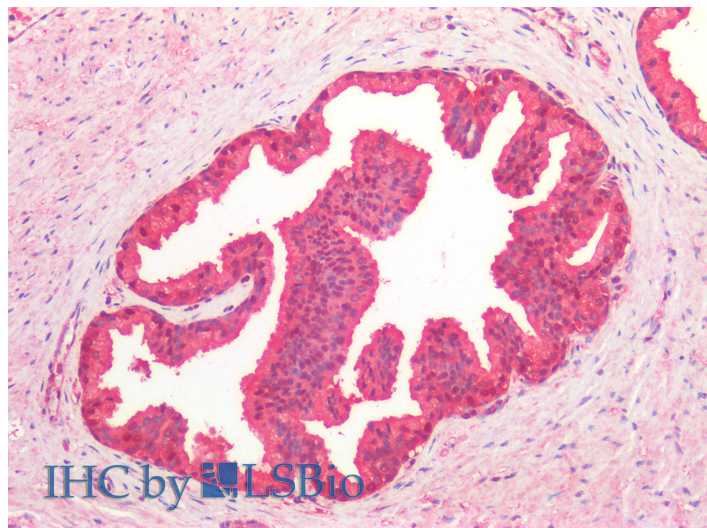


# GOAT ANTI-CDC48/ VCP / YDL126C (BAKER'S YEAST, AA128-142) ANTIBODY

**SKU:** EB11799



## SPECIFICATIONS

**Formulation** Supplied at 0.5 mg/ml in Tris saline, 0.02% sodium azide, pH7.3 with 0.5% bovine serum albumin.

**Unit Size** 100 µg

**Storage Instructions** Aliquot and store at -20°C. Minimize freezing and thawing.

**Synonym / Alias Names** TERA| p97| valosin containing protein| transitional endoplasmic reticulum ATPase| VCP|YDL126C|CDC48p|CDC48

**Accession ID** NP\_010157.1

**Blocking Peptide** EBP11799

**Immunogen** Peptide with sequence C-PIADTIEGITGNLFD, from the internal region of the protein sequence according to NP\_010157.1.

**Product Comments** This antibody may cross react in many other species.

**Peptide Sequence** C-PIADTIEGITGNLFD

<b>Purification Method</b>	Purified from goat serum by ammonium sulphate precipitation followed by antigen affinity chromatography using the immunizing peptide.
<b>Shipping Instructions</b>	Refrigerated
<b>Predicted Species</b>	Saccharomyces cerevisiae S288c, Human, Mouse, Rat, Dog, Cow
<b>Reactive Species</b>	Human
<b>Product Grade</b>	<a href="https://prod-vector-labs-pimcore-assets.s3.us-east-1.amazonaws.com/assets/products/image/elite_medium.png">https://prod-vector-labs-pimcore-assets.s3.us-east-1.amazonaws.com/assets/products/image/elite_medium.png</a>
<b>IHC Results</b>	Paraffin embedded Human Prostate. Recommended concentration: 5µg/ml.
<b>ELISA</b>	
<b>Detection Limit</b>	Antibody detection limit dilution 1:128000.
<b>Western Blot</b>	Approx 100kDa band observed in lysates of cell line HeLa (calculated MW of 92.0kDa according to NP_010157.1). Recommended concentration: 0.3-1µg/ml.
<b>Application Type</b>	Pep-ELISA, WB, IHC

## DOCUMENTS

- [Data Sheet](#)

## GALLERY IMAGES

