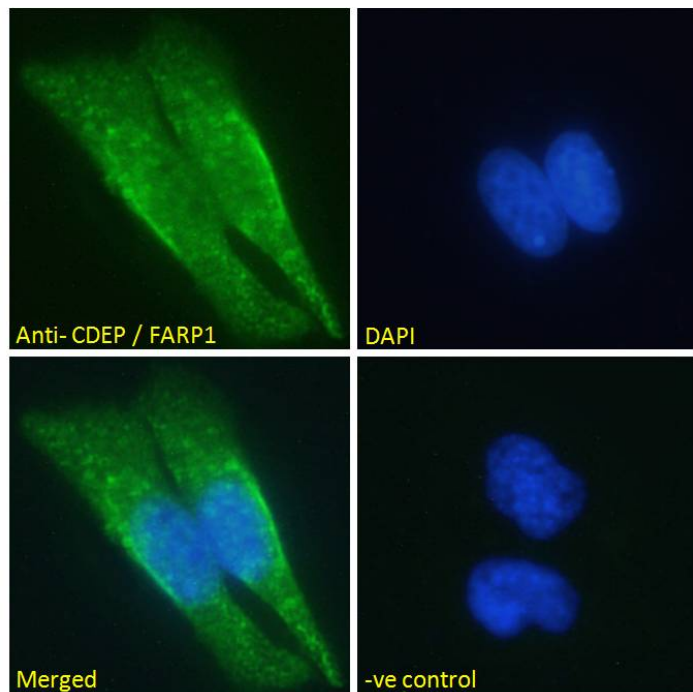


GOAT ANTI-CDEP / FARP1 ANTIBODY

SKU: EB06135



SPECIFICATIONS

Formulation Supplied at 0.5 mg/ml in Tris saline, 0.02% sodium azide, pH7.3 with 0.5% bovine serum albumin.

Unit Size 100 µg

Storage Instructions Aliquot and store at -20°C. Minimize freezing and thawing.

Synonym / Alias Names FARP1|FERM, RhoGEF (ARHGEF) and pleckstrin domain protein 1 (chondrocyte-derived)|CDEP|chondrocyte-derived ezrin-like protein|RP11-111L24.1|MGC87400|PLEKH2|FERM, RhoGEF, and pleckstrin domain protein 1

Usage Summary **Immunofluorescence:** Strong expression of the protein seen in the cytoplasm of U2OS and HeLa cells. Recommended concentration: 10µg/ml. **Flow Cytometry:** Flow cytometric analysis of HepG2 cells. Recommended concentration: 10ug/ml.

Accession ID NP_005757.1; NP_001001715.2; NP_001273768.1

Blocking Peptide EBP06135

Immunogen	Peptide with sequence GEIEQRPTPGSRL-C, from the N Terminus of the protein sequence according to NP_005757.1; NP_001001715.2; NP_001273768.1.
Peptide Sequence	GEIEQRPTPGSRL-C
Purification Method	Purified from goat serum by ammonium sulphate precipitation followed by antigen affinity chromatography using the immunizing peptide.
Shipping Instructions	Refrigerated
Predicted Species	Human, Mouse, Rat, Cow
Reactive Species	Human
Human Gene ID	10160
Product Grade	https://prod-vector-labs-pimcore-assets.s3.us-east-1.amazonaws.com/assets/products/image/elite_medium.png
ELISA Detection Limit	Antibody detection limit dilution 1:32000.
Western Blot	Preliminary experiments showed an approx 110-120kDa band in Human Frontal Cortex lysates (calculated MW of 119kDa according to NP_005757.1).. An additional band was also consistently observed at 40kDa and was successfully blocked by incubation with the immunizing peptide. Recommended concentration: 0.3-1µg/ml. Primary incubation 1 hour at room temperature.
Application Type	Pep-ELISA, IF, FC

DOCUMENTS

- [Data Sheet](#)

GALLERY IMAGES

