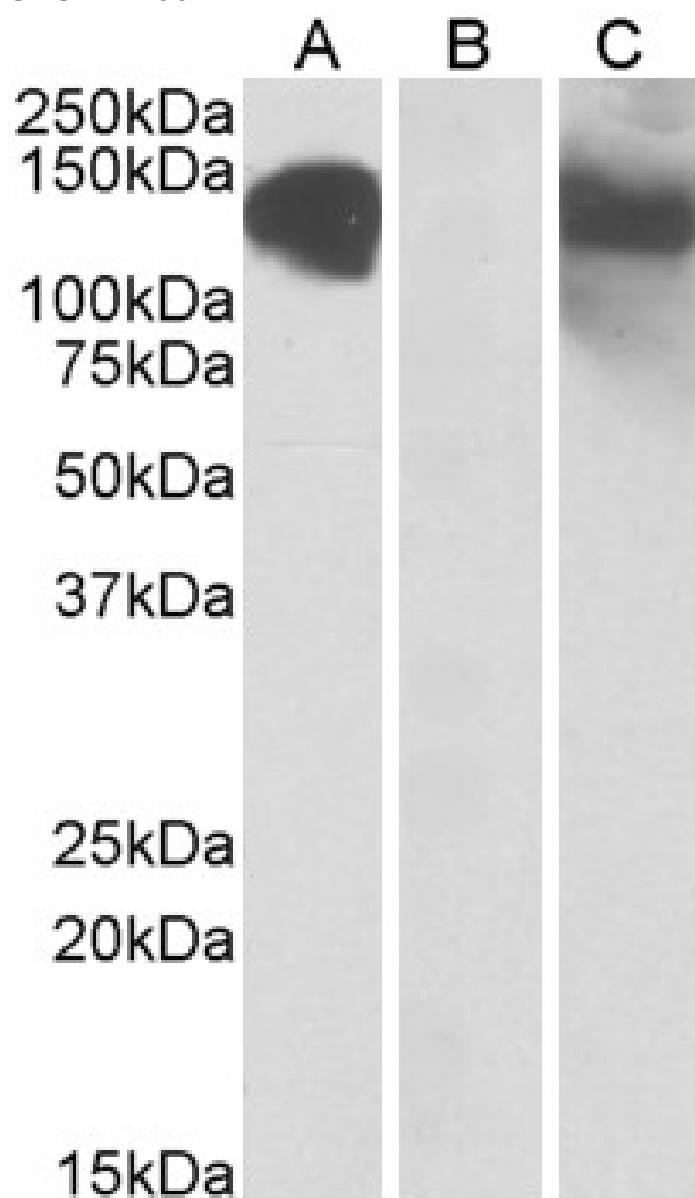


## GOAT ANTI-CDH11 (AA 26-37) ANTIBODY

SKU: EB10071



## SPECIFICATIONS

<b>Formulation</b>	Supplied at 0.5 mg/ml in Tris saline, 0.02% sodium azide, pH7.3 with 0.5% bovine serum albumin.
<b>Unit Size</b>	100 µg
<b>Storage Instructions</b>	Aliquot and store at -20°C. Minimize freezing and thawing.
<b>Synonym / Alias Names</b>	CDH11 osteoblast cadherin OSF-4 OB-cadherin OB CDHOB cadherin-11 cadherin 11, type 2, OB-cadherin (osteoblast) cadherin 11, type 2 CAD11
<b>Usage Summary</b>	Purchase the +ve control! The transfected lysate used to QC this product is available for sale. Please email <a href="mailto:sales@everestbiotech.com">sales@everestbiotech.com</a> to request datasheet, pricing and delivery information.
<b>Accession ID</b>	NP_001788.2
<b>Blocking Peptide</b>	EBP10071
<b>Immunogen</b>	Peptide with sequence C-ERRGHLRPSFHG, from the internal region of the protein sequence according to NP_001788.2.
<b>Peptide Sequence</b>	C-ERRGHLRPSFHG
<b>Purification Method</b>	Purified from goat serum by ammonium sulphate precipitation followed by antigen affinity chromatography using the immunizing peptide.
<b>Shipping Instructions</b>	Refrigerated
<b>Predicted Species</b>	Human, Mouse, Rat, Dog, Cow
<b>Reactive Species</b>	Human
<b>Human Gene ID</b>	1009
<b>Mouse Gene ID</b>	12552
<b>Rat Gene ID</b>	84407
<b>Product Grade</b>	<a href="https://prod-vector-labs-pimcore-assets.s3.us-east-1.amazonaws.com/assets/products/image/elite_medium.png">https://prod-vector-labs-pimcore-assets.s3.us-east-1.amazonaws.com/assets/products/image/elite_medium.png</a>
<b>ELISA Detection Limit</b>	Antibody detection limit dilution 1:2000.
<b>Western Blot</b>	In transfected HEK293 transiently expressing full-length Human CDH11 (myc and DYKDDDDK tagged), a band of approx. 130kDa was observed. No bands were observed in mock-transfected HEK293 and the same band was observed using anti-myc tag antibody. Recommended concentration, 0.5-1µg/ml.
<b>Application Type</b>	Pep-ELISA, WB-Trf

## DOCUMENTS

- [Data Sheet](#)

## GALLERY IMAGES

