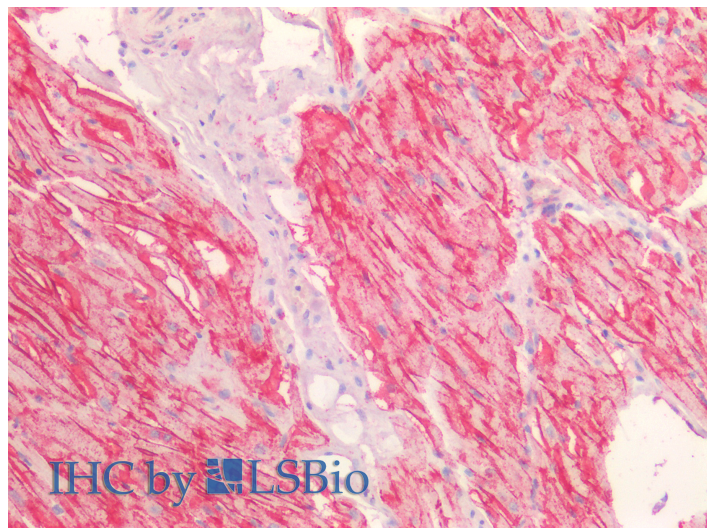


GOAT ANTI-CDH13 / H-CADHERIN ANTIBODY

SKU: EB12228



SPECIFICATIONS

Formulation Supplied at 0.5 mg/ml in Tris saline, 0.02% sodium azide, pH7.3 with 0.5% bovine serum albumin.

Unit Size 100 µg

Storage Instructions Aliquot and store at -20°C. Minimize freezing and thawing.

Synonym /

Alias Names heart cadherin|cadherin-13|T-cadherin|T-cad|H-cadherin|P105|CDHH|cadherin 13, H-cadherin (heart)|CDH13

Accession ID NP_001248.1; NP_001207417.1; NP_001207418.1

Blocking Peptide EBP12228

Immunogen Peptide with sequence C-DSDRPERSKFRLTGK, from the internal region of the protein sequence according to NP_001248.1; NP_001207417.1; NP_001207418.1.

Product Comments The immunizing peptide represents the N terminus of the mature protein. This antibody is expected to recognize isoform 1, 2 and 3 (NP_001248.1; NP_001207417.1; NP_001207418.1).

Peptide Sequence C-DSDRPERSKFRLTGK

Purification Method Purified from goat serum by ammonium sulphate precipitation followed by antigen affinity chromatography using the immunizing peptide.

Shipping Instructions	Refrigerated
Predicted Species	Human
Reactive Species	Human
Human Gene ID	1012
Product Grade	https://prod-vector-labs-pimcore-assets.s3.us-east-1.amazonaws.com/assets/products/image/elite_medium.png
IHC Results	Paraffin embedded Human Heart. Recommended concentration: 5µg/ml.
ELISA	
Detection Limit	Antibody detection limit dilution 1:4000.
Western Blot	Approx 110kDa band observed in Human Heart lysates and 85kDa in Human Brain (Amygdala and Hippocampus) lysates (calculated MW of 78.3kDa according to NP_001248.1). The observed molecular weights correspond to the glycosylated forms. Recommended concentration: 0.3-1µg/ml.
Application Type	Pep-ELISA, WB, IHC

DOCUMENTS

- [Data Sheet](#)

GALLERY IMAGES

