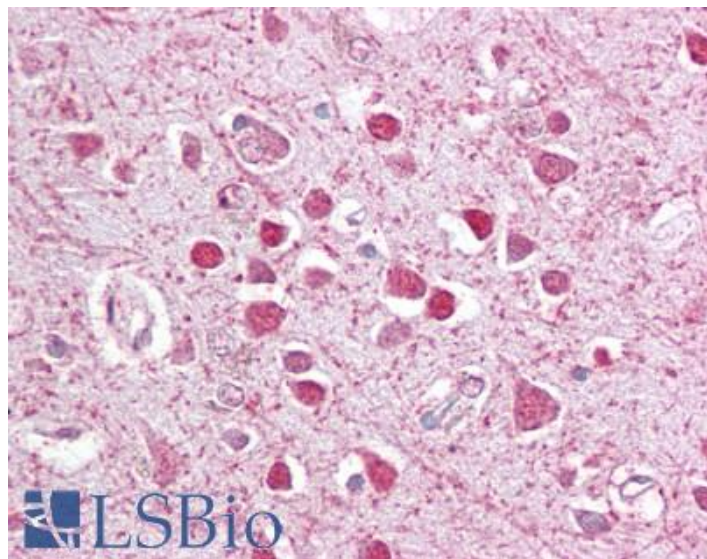


# GOAT ANTI-CEBPG ANTIBODY

**SKU:** EB08423



## SPECIFICATIONS

**Formulation** Supplied at 0.5 mg/ml in Tris saline, 0.02% sodium azide, pH7.3 with 0.5% bovine serum albumin.

**Unit Size** 100 µg

**Storage Instructions** Aliquot and store at -20°C. Minimize freezing and thawing.

**Synonym / Alias Names** CCAAT/enhancer binding protein gamma|IG/EBP-1|GPE1BP|CCAAT/enhancer binding protein (C/EBP), gamma|CEBPG

**Accession ID** NP\_001797.1

**Blocking Peptide** EBP08423

**Immunogen** Peptide with sequence C-ENTTADGDNAGQ, from the C Terminus of the protein sequence according to NP\_001797.1.

**Peptide Sequence** C-ENTTADGDNAGQ

**Purification Method** Purified from goat serum by ammonium sulphate precipitation followed by antigen affinity chromatography using the immunizing peptide.

**Shipping Instructions** Refrigerated

<b>Predicted Species</b>	Human
<b>Reactive Species</b>	Human
<b>Human Gene ID</b>	1054
<b>Product Grade</b>	<a href="https://prod-vector-labs-pimcore-assets.s3.us-east-1.amazonaws.com/assets/products/image/elite_medium.png">https://prod-vector-labs-pimcore-assets.s3.us-east-1.amazonaws.com/assets/products/image/elite_medium.png</a>
<b>IHC Results</b>	Paraffin embedded Human Brain (Cortex). Recommended concentration: 2.5µg/ml.
<b>ELISA Detection Limit</b>	Antibody detection limit dilution 1:2000.
<b>Western Blot</b>	Preliminary experiments gave an approx. 26kDa band in Human Lung lysates and in lysates of cell lines A549 after 1µg/ml antibody staining. Please note that currently we cannot find an explanation in the literature for the band we observe given the calculated size of 16.4kDa according to NP_001797.1. The 26kDa band was successfully blocked by incubation with the immunizing peptide.
<b>Application Type</b>	Pep-ELISA, IHC

## DOCUMENTS

- [Data Sheet](#)

## GALLERY IMAGES

