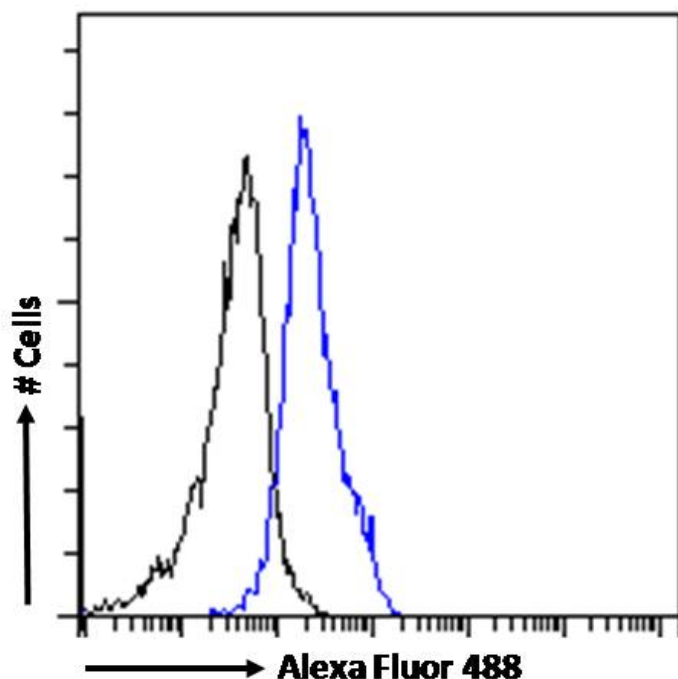


GOAT ANTI-CECR2 ANTIBODY

SKU: EB05799



SPECIFICATIONS

Formulation Supplied at 0.5 mg/ml in Tris saline, 0.02% sodium azide, pH7.3 with 0.5% bovine serum albumin.

Unit Size 100 µg

Storage Instructions Aliquot and store at -20°C. Minimize freezing and thawing.

Synonym /

Alias Names KIAA1740|cat eye syndrome chromosome region, candidate 2|CECR2

Usage Summary **Immunofluorescence:** Strong expression of the protein seen in the nuclei of U2OS cells. Recommended concentration: 10µg/ml. **Flow Cytometry:** Flow cytometric analysis of HEK293 cells. Recommended concentration: 10ug/ml.

Accession ID NP_001276976.1; NP_001276975.1

Blocking Peptide EBP05799

Immunogen	Peptide with sequence C-PPHKPPTLPLDQS, from the C Terminus of the protein sequence according to NP_001276976.1; NP_001276975.1.
Peptide Sequence	C-PPHKPPTLPLDQS
Purification Method	Purified from goat serum by ammonium sulphate precipitation followed by antigen affinity chromatography using the immunizing peptide.
Shipping Instructions	Refrigerated
Predicted Species	Human, Dog
Reactive Species	Human
Human Gene ID	27443
Product Grade	https://prod-vector-labs-pimcore-assets.s3.us-east-1.amazonaws.com/assets/products/image/elite_medium.png
ELISA	
Detection Limit	Antibody detection limit dilution 1:32000.
Application Type	Pep-ELISA, IF, FC

DOCUMENTS

- [Data Sheet](#)

GALLERY IMAGES

