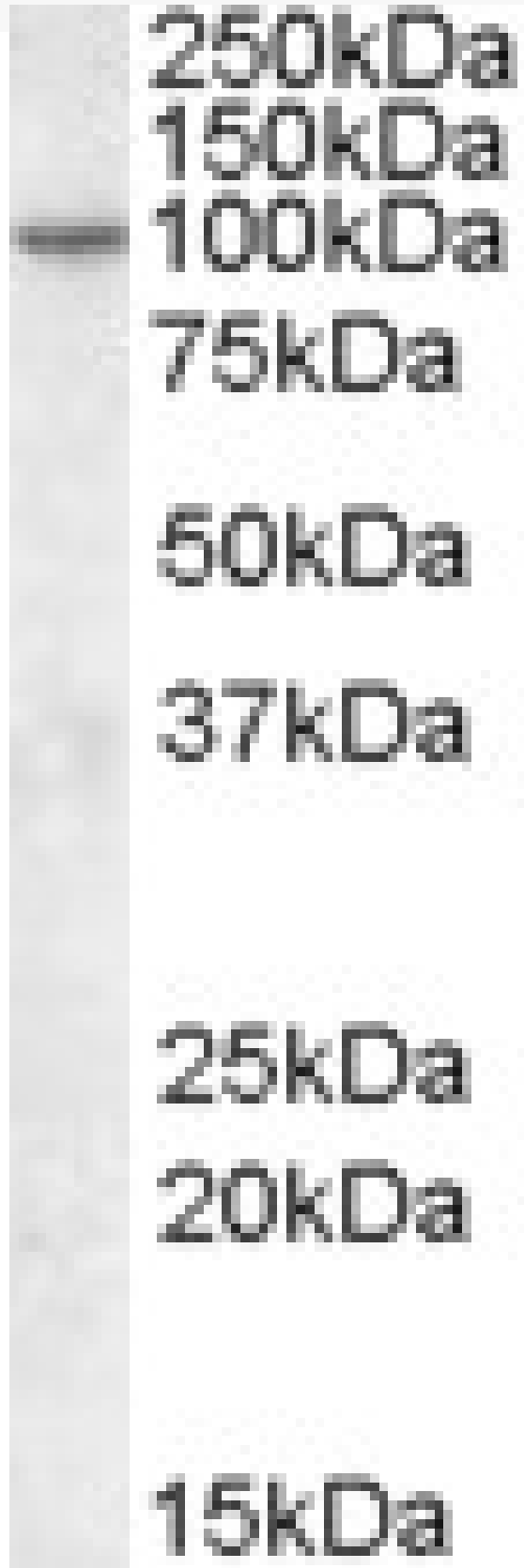


GOAT ANTI-CENTG1 / PIKE ANTIBODY

SKU: EB09314



SPECIFICATIONS

Formulation	Supplied at 0.5 mg/ml in Tris saline, 0.02% sodium azide, pH7.3 with 0.5% bovine serum albumin.
Unit Size	100 µg
Storage Instructions	Aliquot and store at -20°C. Minimize freezing and thawing.
Synonym / Alias Names	phosphoinositide 3-kinase enhancer centaurin gamma1 GTP-binding and GTPase activating protein 2 Arf GAP with GTP-binding protein-like, ANK repeat and PH domains 2 PIKE KIAA0167 GGAP2 FLJ16430 AGAP2 centaurin, gamma 1 CENTG1
Accession ID	NP_055585.1
Blocking Peptide	EBP09314
Immunogen	Peptide with sequence C-QASLDSIREAVINSQ, from the internal region of the protein sequence according to NP_055585.1.
Product Comments	This antibody is expected to recognize isoform PIKE-S (NP_055585.1).
Peptide Sequence	C-QASLDSIREAVINSQ
Purification Method	Purified from goat serum by ammonium sulphate precipitation followed by antigen affinity chromatography using the immunizing peptide.
Shipping Instructions	Refrigerated
Predicted Species	Human
Reactive Species	Human
Human Gene ID	116986
Product Grade	https://prod-vector-labs-pimcore-assets.s3.us-east-1.amazonaws.com/assets/products/image/elite_medium.png
IHC Results	Paraffin embedded Human Thyroid and Kidney. Recommended concentration: 3.75µg/ml.
ELISA	
Detection Limit	Antibody detection limit dilution 1:8000.
Western Blot	Approx 100kDa band observed in Human Brain (Amygdala and Cerebral Cortex) lysates (calculated MW of 90.5kDa according to NP_055585.1). Recommended concentration: 0.3-1µg/ml. Primary incubation was 1 hour.
Application Type	Pep-ELISA, WB, IHC

DOCUMENTS

- [Data Sheet](#)

GALLERY IMAGES

