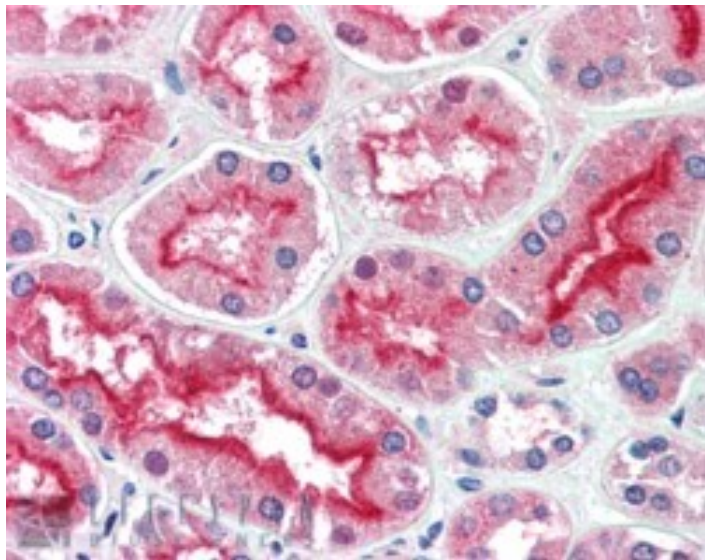


GOAT ANTI-CENTG3 / MRIP1 ANTIBODY

SKU: EB06127



SPECIFICATIONS

Formulation	Supplied at 0.5 mg/ml in Tris saline, 0.02% sodium azide, pH7.3 with 0.5% bovine serum albumin.
Unit Size	100 µg
Storage	Aliquot and store at -20°C. Minimize freezing and thawing.
Instructions	
Synonym / Alias	centaurin, gamma 3 CRMP (collapsin response mediator protein) associated FLJ34452 FLJ16146 CRAG ArfGAP with GTPase domain, ankyrin repeat and PH domain 3 MRIP-1 protein MRIP-1 centaurin, gamma 3 MRIP1 CENTG3 AGAP3
Names	
Accession ID	NP_114152.3
Blocking Peptide	EBP06127
Immunogen	Peptide with sequence C-NPSAELHRSPSLL, from the C Terminus of the protein sequence according to NP_114152.3.
Peptide Sequence	C-NPSAELHRSPSLL
Purification Method	Purified from goat serum by ammonium sulphate precipitation followed by antigen affinity chromatography using the immunizing peptide.
Shipping Instructions	Refrigerated

Predicted Species	Human, Mouse, Rat
Reactive Species	Human
Human Gene ID	116988
Mouse Gene ID	213990
Product Grade	https://prod-vector-labs-pimcore-assets.s3.us-east-1.amazonaws.com/assets/products/image/elite_medium.png
IHC Results	In paraffin embedded Human Kidney shows strong staining of brush borders in Proximal Convoluted tubules. Recommended concentration, 5-10µg/ml.
ELISA	
Detection Limit	Antibody detection limit dilution 1:32000.
Application Type	Pep-ELISA, IHC

DOCUMENTS

- [Data Sheet](#)

GALLERY IMAGES

