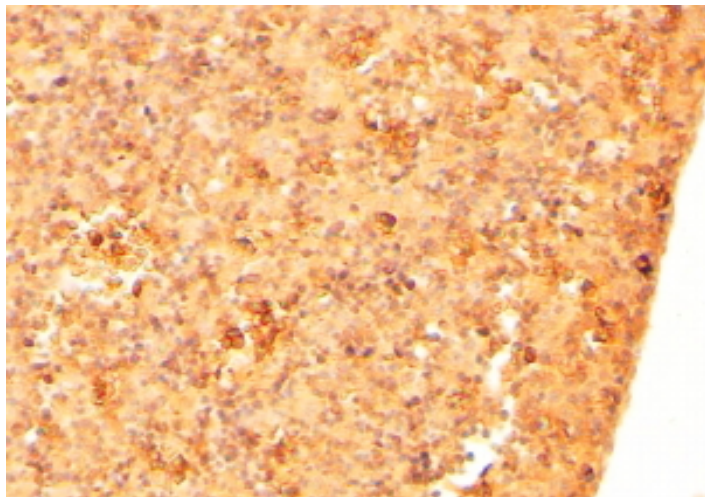


# GOAT ANTI-CFC1 / CRIPTO-1 ANTIBODY

**SKU:** EB06894



## SPECIFICATIONS

**Formulation** Supplied at 0.5 mg/ml in Tris saline, 0.02% sodium azide, pH7.3 with 0.5% bovine serum albumin.

**Unit Size** 100 µg

**Storage Instructions** Aliquot and store at -20°C. Minimize freezing and thawing.

**Synonym /**

**Alias Names** FLJ77897|CR-1|MGC133213|cryptic gene|cryptic|cripto-1|cripto, FRL-1, cryptic family 1|CRYPTIC|HTX2|CFC1

**Accession ID** NP\_115934.1

**Blocking Peptide** EBP06894

**Immunogen** Peptide with sequence HFTGRYCEHDQRRSEC, from the internal region of the protein sequence according to NP\_115934.1.

**Peptide Sequence** HFTGRYCEHDQRRSEC

**Purification Method** Purified from goat serum by ammonium sulphate precipitation followed by antigen affinity chromatography using the immunizing peptide.

**Shipping Instructions** Refrigerated

**Predicted Species** Human, Mouse, Rat

<b>Reactive Species</b>	Mouse
<b>Human Gene ID</b>	55997
<b>Product Grade</b>	<a href="https://prod-vector-labs-pimcore-assets.s3.us-east-1.amazonaws.com/assets/products/image/elite_medium.png">https://prod-vector-labs-pimcore-assets.s3.us-east-1.amazonaws.com/assets/products/image/elite_medium.png</a>
<b>IHC Results</b>	In paraffin embedded Mouse Embryonic Liver shows staining of the hepatocyte cell membranes. Recommended concentration: 1-2µg/ml.
<b>ELISA Detection Limit</b>	Antibody detection limit dilution 1:32000.
<b>Western Blot</b>	Preliminary experiments gave an approx 55kDa band in Human Breast, Placenta and Testis lysates after 0.1µg/ml antibody staining. Please note that currently we cannot find an explanation in the literature for the band we observe given the calculated size of 24.6kDa according to NP_115934.1. The 55kDa band was successfully blocked by incubation with the immunizing peptide.
<b>Application Type</b>	Pep-ELISA, IHC

## DOCUMENTS

- [Data Sheet](#)

## GALLERY IMAGES

