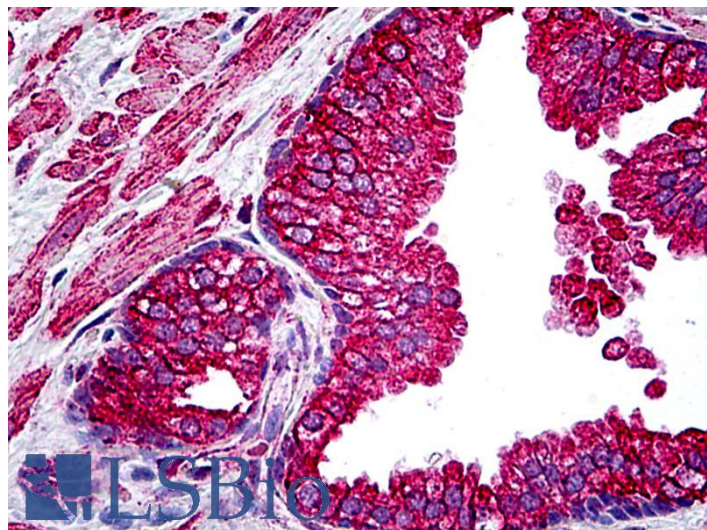


GOAT ANTI-CFTR ANTIBODY

SKU: EB06694



SPECIFICATIONS

Formulation	Supplied at 0.5 mg/ml in Tris saline, 0.02% sodium azide, pH7.3 with 0.5% bovine serum albumin.
Unit Size	100 µg
Storage	Aliquot and store at -20°C. Minimize freezing and thawing.
Instructions	
Synonym / Alias	ATP-binding cassette, sub-family C member 7 CFTR MRP cystic fibrosis transmembrane conductance regulator,
Names	ATP-binding cassette (sub-family C, member 7) dJ760C5.1 TNR-CFTR ABCC7 ABC35 MRP7 CF CFTR
Accession ID	NP_000483.3
Blocking Peptide	EBP06694
Immunogen	Peptide with sequence QRSPLEKASVSK-C, from the N Terminus of the protein sequence according to NP_000483.3.
Peptide Sequence	QRSPLEKASVSK-C
Purification Method	Purified from goat serum by ammonium sulphate precipitation followed by antigen affinity chromatography using the immunizing peptide.
Shipping Instructions	Refrigerated

Predicted Species	Human, Mouse, Rat, Dog, Cow
Reactive Species	Human
Human Gene ID	1080
Mouse Gene ID	12638
Rat Gene ID	24255
Product Grade	https://prod-vector-labs-pimcore-assets.s3.us-east-1.amazonaws.com/assets/products/image/elite_medium.png
IHC Results	In paraffin embedded Human Kidney shows membranous staining in DCT cells. Paraffin embedded Human Prostate. Recommended concentration: 2.5µg/ml.
ELISA	
Detection Limit	Antibody detection limit dilution 1:32000.
Application Type	Pep-ELISA, IHC

DOCUMENTS

- [Data Sheet](#)

GALLERY IMAGES

