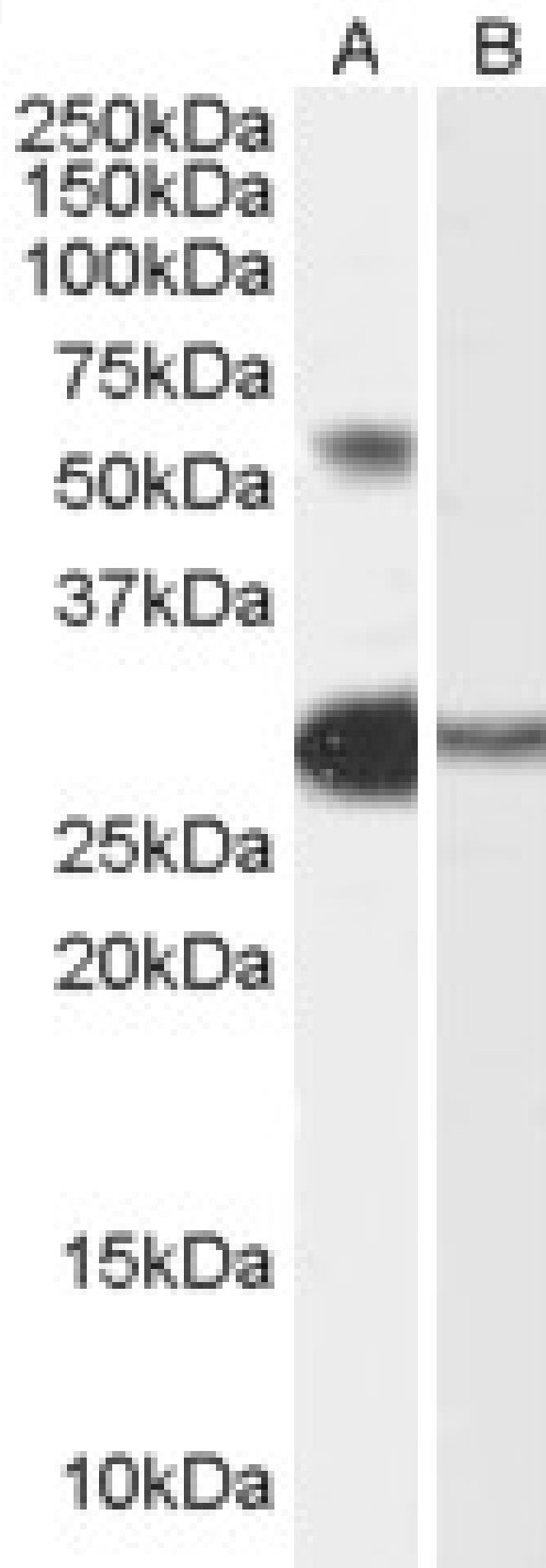


GOAT ANTI-CHA / TCFL5 ANTIBODY

SKU: EB07447



SPECIFICATIONS

Formulation	Supplied at 0.5 mg/ml in Tris saline, 0.02% sodium azide, pH7.3 with 0.5% bovine serum albumin.
Unit Size	100 µg
Storage Instructions	Aliquot and store at -20°C. Minimize freezing and thawing.
Synonym / Alias Names	Cha transcription factor transcription factor-like 5 protein HPV-16 E2 binding protein 1 MGC46135 Figlb E2BP-1 transcription factor-like 5 (basic helix-loop-helix) CHA TCFL5
Accession ID	NP_006593.2
Blocking Peptide	EBP07447
Immunogen	Peptide with sequence C-KYIQRHGD SLKKE, from the internal region of the protein sequence according to NP_006593.2.
Peptide Sequence	C-KYIQRHGD SLKKE
Purification Method	Purified from goat serum by ammonium sulphate precipitation followed by antigen affinity chromatography using the immunizing peptide.
Shipping Instructions	Refrigerated
Predicted Species	Human, Mouse, Rat, Dog
Reactive Species	Human
Human Gene ID	10732
Mouse Gene ID	277353
Product Grade	https://prod-vector-labs-pimcore-assets.s3.us-east-1.amazonaws.com/assets/products/image/elite_medium.png
ELISA Detection Limit	Antibody detection limit dilution 1:64000.
Western Blot	Approx 55kDa band observed in Human Testis lysates (calculated MW of 52.7kDa according to NP_006593.2). Recommended concentration: 0.3-1µg/ml. An additional band of unknown identity was also consistently observed at 28kDa. This band was greatly reduced by incubation with the immunising peptide.
Application Type	Pep-ELISA, WB

DOCUMENTS

- [Data Sheet](#)

GALLERY IMAGES

