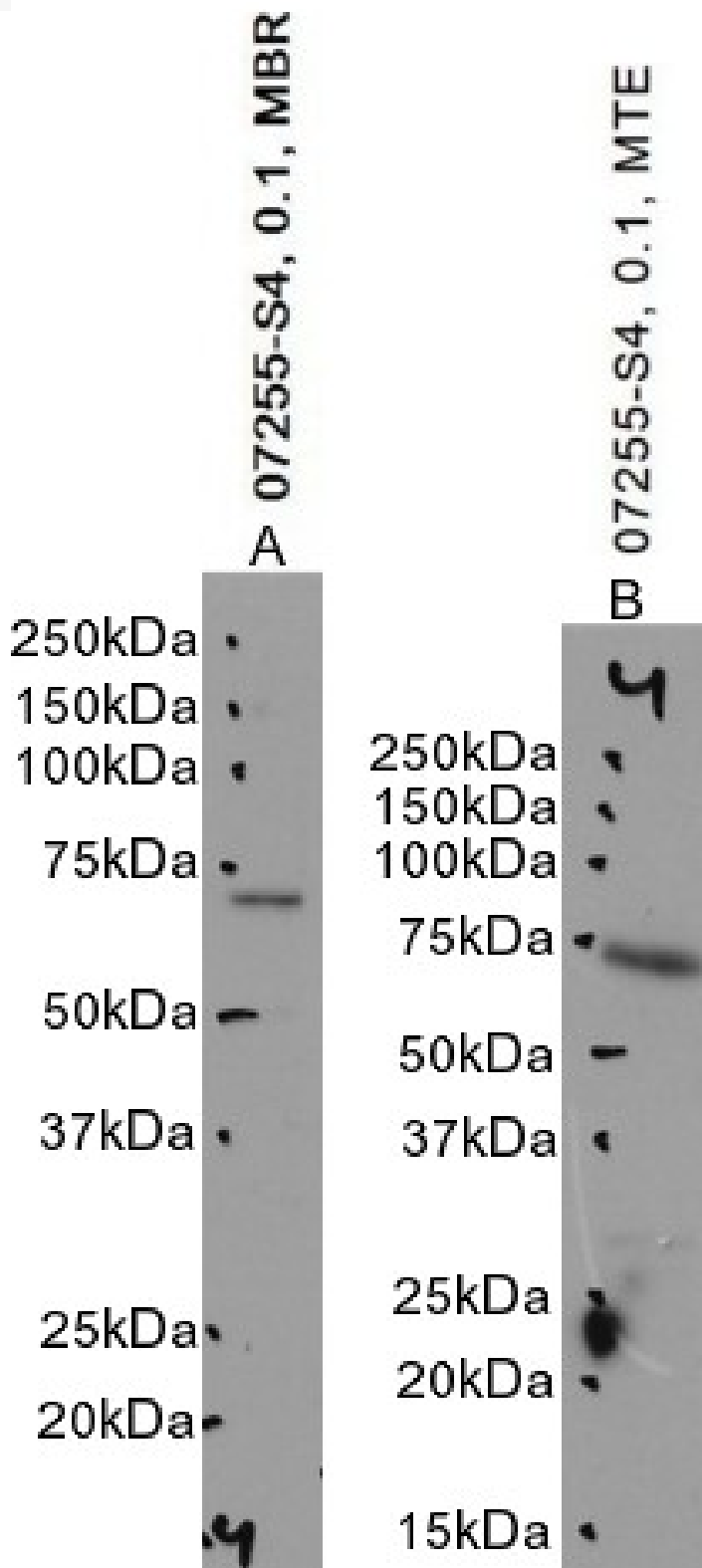


# GOAT ANTI-CHAT (MOUSE) ANTIBODY

**SKU:** EB07255



## SPECIFICATIONS

**Formulation** Supplied at 0.5 mg/ml in Tris saline, 0.02% sodium azide, pH7.3 with 0.5% bovine serum albumin.

**Unit Size** 100 µg

**Storage Instructions** Aliquot and store at -20°C. Minimize freezing and thawing.

**Synonym /**

**Alias Names** B230380D24Rik|choline acetyltransferase|Chat

**Accession ID** NP\_034021.1

**Blocking Peptide** EBP07255

**Immunogen** Peptide with sequence C-KERARGPTKPSNLD, from the C Terminus of the protein sequence according to NP\_034021.1.

**Product Comments** This antibody is NOT expected to cross-react to Human CHAT.

**Peptide Sequence** C-KERARGPTKPSNLD

**Purification Method** Purified from goat serum by ammonium sulphate precipitation followed by antigen affinity chromatography using the immunizing peptide.

**Shipping Instructions** Refrigerated

**Predicted Species** Mouse, Rat

**Reactive Species** Mouse

**Mouse Gene ID** 12647

**Rat Gene ID** 432359

**Product Grade** [https://prod-vector-labs-pimcore-assets.s3.us-east-1.amazonaws.com/assets/products/image/elite\\_medium.png](https://prod-vector-labs-pimcore-assets.s3.us-east-1.amazonaws.com/assets/products/image/elite_medium.png)

**ELISA**

**Detection Limit** Antibody detection limit dilution 1:128000.

**Western Blot** Approx 75kDa band observed in Mouse Brain and Testis lysates, and approx. 70kDa in preliminary testing of Rat Testes and Mouse small intestine lysate (calculated MW of 72.3kDa according to Mouse NP\_034021.1). Recommended concentration: 0.1-0.3 µg/ml. Primary incubation 1 hour at room temperature.

**Application Type** Pep-ELISA, WB

## DOCUMENTS

- [Data Sheet](#)

## GALLERY IMAGES

