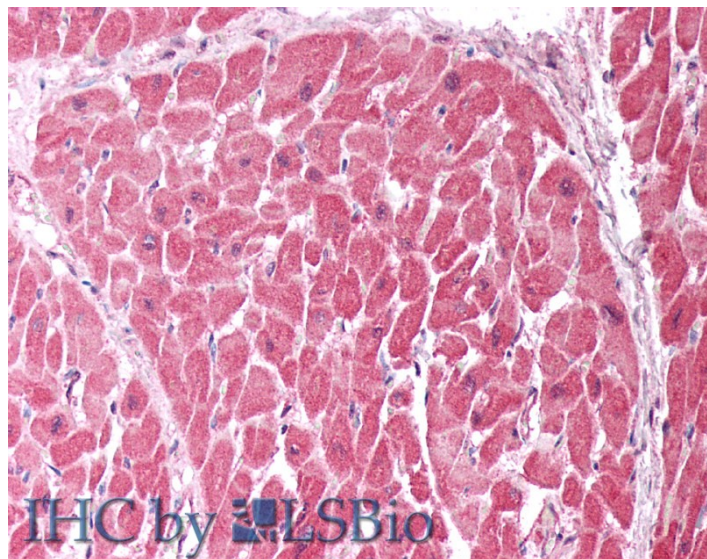


GOAT ANTI-CHCHD3 ANTIBODY

SKU: EB09839



SPECIFICATIONS

Formulation Supplied at 0.5 mg/ml in Tris saline, 0.02% sodium azide, pH7.3 with 0.5% bovine serum albumin.

Unit Size 100 µg

Storage Instructions Aliquot and store at -20°C. Minimize freezing and thawing.

Synonym /

Alias coiled-coil-helix-coiled-coil-helix domain containing 3|FLJ20420|CHCHD3

Names

Accession ID NP_060282.1

Blocking Peptide EBP09839

Immunogen Peptide with sequence KFKRYESHPVCAD, from the internal region of the protein sequence according to NP_060282.1.

Peptide Sequence KFKRYESHPVCAD

Purification Method Purified from goat serum by ammonium sulphate precipitation followed by antigen affinity chromatography using the immunizing peptide.

Shipping Instructions Refrigerated

Predicted Species	Human, Mouse, Rat, Dog, Cow, Sheep
Reactive Species	Human
Human Gene ID	54927
Rat Gene ID	296966
Product Grade	https://prod-vector-labs-pimcore-assets.s3.us-east-1.amazonaws.com/assets/products/image/elite_medium.png
IHC Results	Paraffin embedded Human Heart and Skeletal Muscle. Recommended concentration: 5µg/ml.
ELISA Detection Limit	Antibody detection limit dilution 1:16000.
Western Blot	Approx 26kDa band observed in Human Brain (Cerebellum) and Heart lysates (calculated MW of 26.2kDa according to NP_060282.1). Recommended concentration: 1-3µg/ml. A customer found ~30kDa in THP1 and in Human primary monocyte derived dendritic cells.
Application Type	Pep-ELISA, WB, IHC

SELECTED REFERENCES

[{"pmid": 28057766, "intro": "**This antibody has been successfully used in IF on Human:**", "title": "Rapid degradation of mutant SLC25A46 by the ubiquitin-proteasome system results in MFN1/2 mediated hyperfusion of mitochondria.", "author": "Steffen J, Vashisht AA, Wan J, Jen JC, Claypool SM, Wohlschlegel J, Koehler CM.", "journal": "Mol Biol Cell. 2017 Jan 5."}]

DOCUMENTS

- [Data Sheet](#)

GALLERY IMAGES

