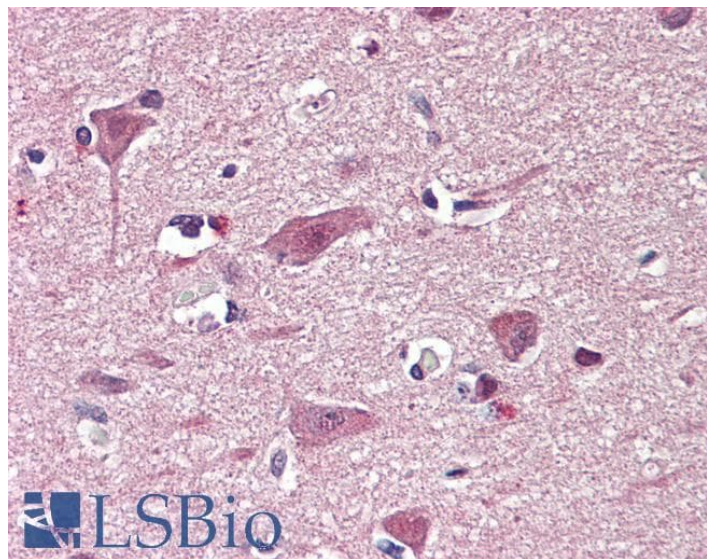


GOAT ANTI-CHD7 ANTIBODY

SKU: EB07994



SPECIFICATIONS

Formulation Supplied at 0.5 mg/ml in Tris saline, 0.02% sodium azide, pH7.3 with 0.5% bovine serum albumin.

Unit Size 100 µg

Storage Instructions Aliquot and store at -20°C. Minimize freezing and thawing.

Synonym /

Alias Names Scoliosis, idiopathic 3|KIAA1416|IS3|FLJ20361|FLJ20357|chromodomain helicase DNA binding protein 7

Accession ID NP_060250.2

Blocking Peptide EBP07994

Immunogen Peptide with sequence C-KDEIDEFANSPSE, from the internal region of the protein sequence according to NP_060250.2.

Peptide Sequence C-KDEIDEFANSPSE

Purification Method Purified from goat serum by ammonium sulphate precipitation followed by antigen affinity chromatography using the immunizing peptide.

Shipping Instructions Refrigerated

Predicted Species	Human, Mouse, Rat
Reactive Species	Human
Human Gene ID	55636
Mouse Gene ID	320790
Rat Gene ID	312974
Product Grade	https://prod-vector-labs-pimcore-assets.s3.us-east-1.amazonaws.com/assets/products/image/elite_medium.png
IHC Results	Paraffin embedded Human Brain (Cortex). Recommended concentration: 3.75µg/ml.
ELISA	
Detection Limit	Antibody detection limit dilution 1:64000.
Western Blot	Preliminary experiments gave bands at approx 250kDa and 48kDa in Rat Spinal Cord lysates after 1µg/ml antibody staining. Please note that currently we cannot find an explanation in the literature for the bands we observe given the calculated size of 336kDa according to Human NP_060250.2 and 175kDa according to predicted Rat NP_001101376.1. Both detected bands were successfully blocked by incubation with the immunizing peptide (and BLAST results with the immunizing peptide sequence did not identify any other proteins to explain the additional bands).
Application Type	Pep-ELISA, IHC

DOCUMENTS

- [Data Sheet](#)

GALLERY IMAGES

