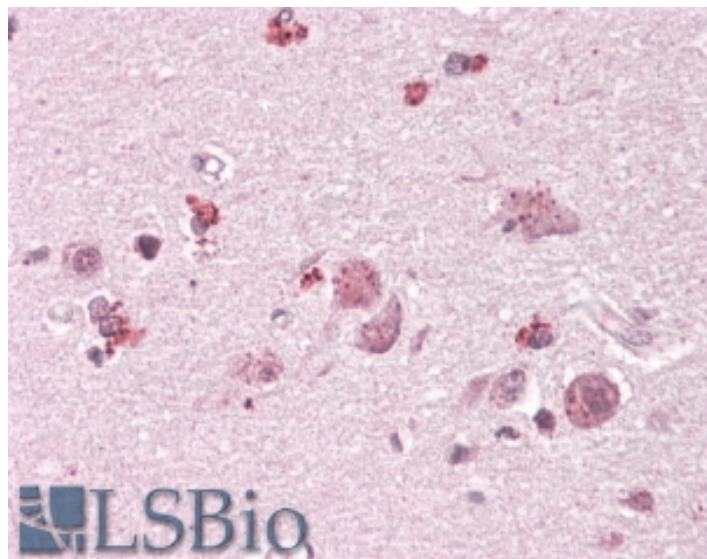


GOAT ANTI-CHN2 ANTIBODY

SKU: EB05207



SPECIFICATIONS

Formulation Supplied at 0.5 mg/ml in Tris saline, 0.02% sodium azide, pH7.3 with 0.5% bovine serum albumin.

Unit Size 100 µg

Storage Instructions Aliquot and store at -20°C. Minimize freezing and thawing.

Synonym / Alias Names CHN2|chimerin (chimaerin) 2|ARHGAP3|RHOGAP3|RhoGAP3|beta chimerin|Chimerin 2 (GTPase-activating protein, rho, 3)|BCH|MGC138360|rho-GTPase-activating protein 3

Accession ID NP_001035025.1; NP_004058.1

Blocking Peptide EBP05207

Immunogen Peptide with sequence C-QILIENEDVLF, from the C Terminus of the protein sequence according to NP_001035025.1; NP_004058.1.

Product Comments This antibody is expected to recognize both reported isoforms (NP_004058.1; NP_001035025.1).

Peptide Sequence C-QILIENEDVLF

Purification Method Purified from goat serum by ammonium sulphate precipitation followed by antigen affinity chromatography using the immunizing peptide.

Shipping Instructions	Refrigerated
Predicted Species	Human, Mouse, Dog, Cow
Reactive Species	Human
Human Gene ID	1124
Product Grade	https://prod-vector-labs-pimcore-assets.s3.us-east-1.amazonaws.com/assets/products/image/elite_medium.png
IHC Results	In paraffin embedded Human Cortex shows staining of neuronal bodies. Recommended concentration, 3-6µg/ml.
ELISA	
Detection Limit	Antibody detection limit dilution 1:8000.
Western Blot	Preliminary experiments in Human Brain (Cerebellum and Frontal Cortex) lysates gave no specific signal but low background (at antibody concentration up to 1µg/ml). We would appreciate any feedback from people in the field - have any results been reported with other antibodies/lysates?
Application Type	Pep-ELISA, IHC

DOCUMENTS

- [Data Sheet](#)

GALLERY IMAGES

