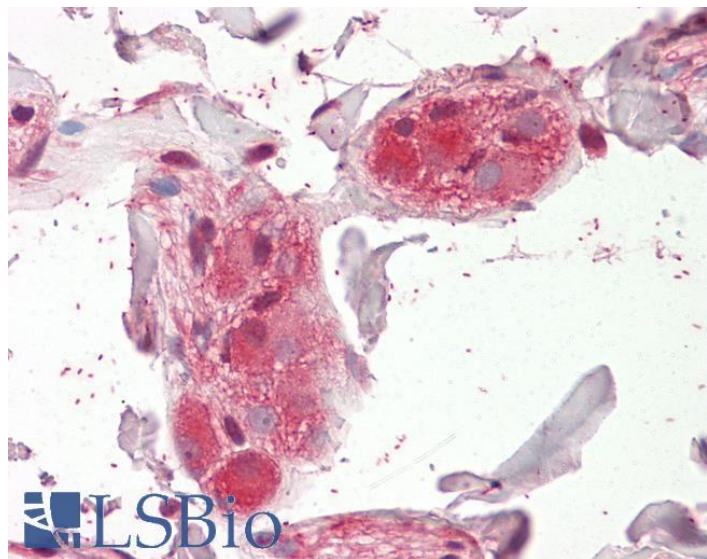


# GOAT ANTI-CHRNA5 ANTIBODY

**SKU:** EB10968



## SPECIFICATIONS

**Formulation** Supplied at 0.5 mg/ml in Tris saline, 0.02% sodium azide, pH7.3 with 0.5% bovine serum albumin.

**Unit Size** 100 µg

**Storage Instructions** Aliquot and store at -20°C. Minimize freezing and thawing.

**Synonym / Alias Names** neuronal nicotinic acetylcholine receptor, alpha5 subunit| neuronal acetylcholine receptor subunit alpha-5| Cholinergic receptor, neuronal nicotinic, alpha polypeptide-5| LNCR2| cholinergic receptor, nicotinic, alpha 5|CHRNA5

**Accession ID** NP\_000736.2

**Blocking Peptide** EBP10968

**Immunogen** Peptide with sequence C-HVDRYFTQKEET, from the internal region of the protein sequence according to NP\_000736.2.

**Peptide Sequence** C-HVDRYFTQKEET

**Purification Method** Purified from goat serum by ammonium sulphate precipitation followed by antigen affinity chromatography using the immunizing peptide.

**Shipping Instructions** Refrigerated

<b>Predicted Species</b>	Human
<b>Reactive Species</b>	Human
<b>Human Gene ID</b>	1138
<b>Product Grade</b>	<a href="https://prod-vector-labs-pimcore-assets.s3.us-east-1.amazonaws.com/assets/products/image/elite_medium.png">https://prod-vector-labs-pimcore-assets.s3.us-east-1.amazonaws.com/assets/products/image/elite_medium.png</a>
<b>IHC Results</b>	Paraffin embedded Human Colon (submucosal plexus). Recommended concentration: 3.75µg/ml.
<b>ELISA</b>	
<b>Detection Limit</b>	Antibody detection limit dilution 1:32000.
<b>Western Blot</b>	Approx 55kDa band observed in lysates of cell line KELLY (calculated MW of 53.1kDa according to NP_000736.2). Recommended concentration: 1-3µg/ml. Primary incubation was 1 hour.
<b>Application Type</b>	Pep-ELISA, WB, IHC

## DOCUMENTS

- [Data Sheet](#)

## GALLERY IMAGES

