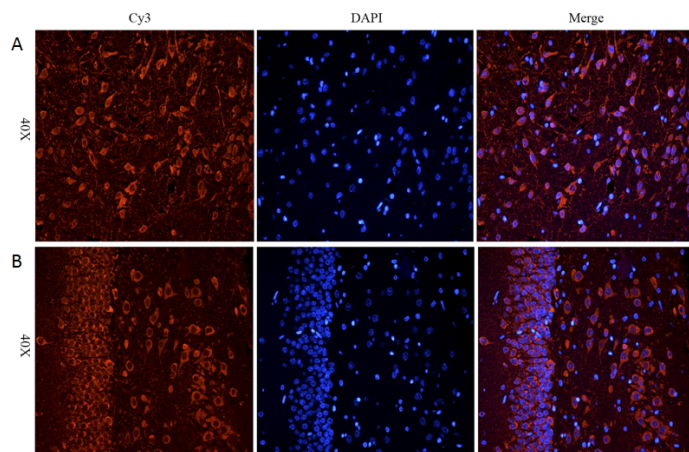


GOAT ANTI-CHRNA7 ANTIBODY

SKU: EB08853



SPECIFICATIONS

Formulation Supplied at 0.5 mg/ml in Tris saline, 0.02% sodium azide, pH7.3 with 0.5% bovine serum albumin.

Unit Size 100 µg

Storage Instructions Aliquot and store at -20°C. Minimize freezing and thawing.

Synonym / Alias Names nicotinic cholinergic receptor alpha 7|nicotinic acetylcholine receptor alpha7 subunit|nicotinic acetylcholine receptor subunit|neuronal nicotinic acetylcholine receptor alpha-7 subunit|neuronal acetylcholine receptor protein, alpha-7 chain|cholinergic receptor, nicotinic, alpha polypeptide 7|alpha7 nicotinic receptor subunit|alpha-7 nicotinic cholinergic receptor subunit|alpha 7 neuronal nicotinic acetylcholine receptor|a7 nicotinic acetylcholine receptor|NACHRA7|cholinergic receptor, nicotinic, alpha 7|CHRNA7

Accession ID NP_000737.1

Blocking Peptide EBP08853

Immunogen Peptide with sequence KRPGEDKVRPACQHKQ, from the internal region of the protein sequence according to NP_000737.1.

Product Comments This antibody also reacts with CHRNA7-FAM7A fusion isoform 1 (NP_647536.1) and isoform 2 (NP_683709.1).

Peptide Sequence KRPGEDKVRPACQHKQ

Purification Method Purified from goat serum by ammonium sulphate precipitation followed by antigen affinity chromatography using the immunizing peptide.

Shipping Instructions	Refrigerated
Predicted Species	Human, Mouse, Rat, Dog, Cow
Reactive Species	Human, Rat
Human Gene ID	1139
Mouse Gene ID	11441
Rat Gene ID	25302
Product Grade	https://prod-vector-labs-pimcore-assets.s3.us-east-1.amazonaws.com/assets/products/image/elite_medium.png
IHC Results	In paraffin embedded Rat Cerebral Cortex and Rat Hippocampus shows membranous staining in neural cells. Recommended concentration: 5-10µg/ml. Paraffin embedded Human Brain (Cortex). Recommended concentration: 3-6µg/ml.
ELISA	
Detection Limit	Antibody detection limit dilution 1:128000.
Application Type	Pep-ELISA, IHC

DOCUMENTS

- [Data Sheet](#)

GALLERY IMAGES

