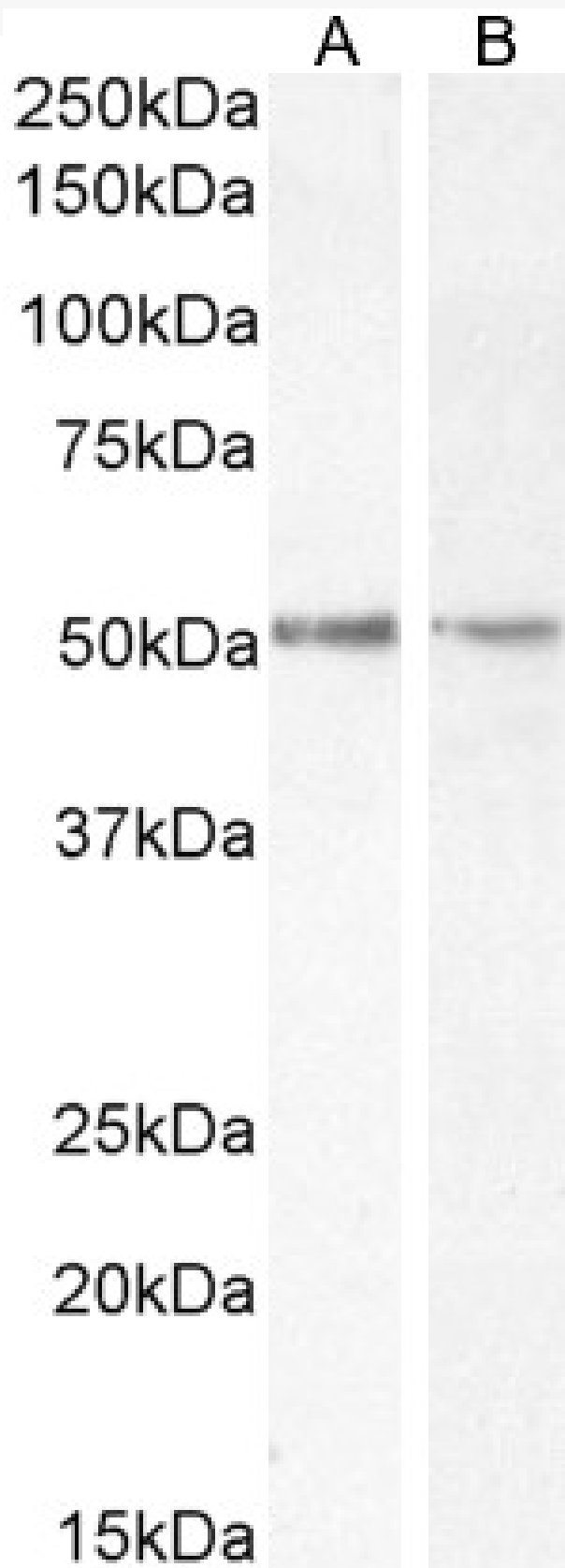


GOAT ANTI-CHROMOGRANIN A PRECURSOR ANTIBODY

SKU: EB07271



SPECIFICATIONS

| | |
|------------------------------|--|
| Formulation | Supplied at 0.5 mg/ml in Tris saline, 0.02% sodium azide, pH7.3 with 0.5% bovine serum albumin. |
| Unit Size | 100 µg |
| Storage Instructions | Aliquot and store at -20°C. Minimize freezing and thawing. |
| Synonym / Alias Names | SP1 Pituitary secretory protein I Parastatin Pancreastatin Vasostatin parathyroid secretory protein 1 CGA CHGA chromogranin A (parathyroid secretory protein 1) chromogranin A precursor |
| Usage Summary | <p><p>Flow Cytometry: Flow cytometric analysis of Jurkat cells. Recommended concentration: 10ug/ml.</p></p> |
| Accession ID | NP_001266.1; NP_001288619.1 |
| Blocking Peptide | EBP07271 |
| Immunogen | Peptide with sequence C-QGAKERAHQKKH, from the internal region of the protein sequence according to NP_001266.1; NP_001288619.1. |
| Peptide Sequence | C-QGAKERAHQKKH |
| Purification Method | Purified from goat serum by ammonium sulphate precipitation followed by antigen affinity chromatography using the immunizing peptide. |
| Shipping Instructions | Refrigerated |
| Predicted Species | Human |
| Reactive Species | Human |
| Human Gene ID | 1113 |
| Product Grade | https://prod-vector-labs-pimcore-assets.s3.us-east-1.amazonaws.com/assets/products/image/elite_medium.png |
| ELISA Detection Limit | Antibody detection limit dilution 1:128000. |
| Western Blot | Approx 50kDa band observed in lysates of cell lines Jurkat and LNCaP, and in Human Cerebellum, Pancreas and Kidney lysates. A band at 35kDa was also observed in pancreas lysate (calculated MW of 50.7 kDa according to NP_001266.1 isoform 1 and 34.3kDa according to NP_001288619.1 isoform 2). Recommended concentration: 0.3-1µg/ml. Primary incubation 1 hour at room temperature. |
| Application Type | Pep-ELISA, WB, FC |

DOCUMENTS

- [Data Sheet](#)

GALLERY IMAGES

