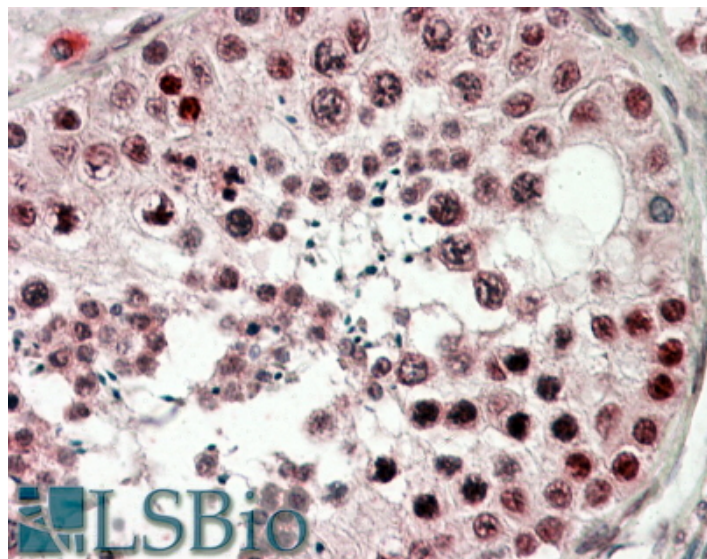


# GOAT ANTI-CIRBP (AA 161-172) ANTIBODY

**SKU:** EB10236



## SPECIFICATIONS

**Formulation** Supplied at 0.5 mg/ml in Tris saline, 0.02% sodium azide, pH7.3 with 0.5% bovine serum albumin.

**Unit Size** 100 µg

**Storage Instructions** Aliquot and store at -20°C. Minimize freezing and thawing.

**Synonym / Alias Names** A18 hnRNP|CIRBP|glycine-rich RNA binding protein|Cold-inducible RNA-binding protein|cold inducible RNA-binding protein|cold inducible RNA binding protein|CIRP

**Accession ID** NP\_001271.1

**Blocking Peptide** EBP10236

**Immunogen** Peptide with sequence C-RDSYDSYATHNE, from the C Terminus of the protein sequence according to NP\_001271.1.

**Product Comments** This antibody is expected to recognize reported isoform 1 (NP\_001271.1) only.

**Peptide Sequence** C-RDSYDSYATHNE

**Purification Method** Purified from goat serum by ammonium sulphate precipitation followed by antigen affinity chromatography using the immunizing peptide.

<b>Shipping Instructions</b>	Refrigerated
<b>Predicted Species</b>	Human, Mouse, Rat, Dog, Cow
<b>Reactive Species</b>	Human, Mouse
<b>Human Gene ID</b>	1153
<b>Mouse Gene ID</b>	12696
<b>Rat Gene ID</b>	81825
<b>Product Grade</b>	<a href="https://prod-vector-labs-pimcore-assets.s3.us-east-1.amazonaws.com/assets/products/image/elite_medium.png">https://prod-vector-labs-pimcore-assets.s3.us-east-1.amazonaws.com/assets/products/image/elite_medium.png</a>
<b>IHC Results</b>	In paraffin embedded Human Testis shows nuclear staining preferentially in type A spermatogonia. Recommended concentration: 3-5µg/ml.
<b>ELISA</b>	
<b>Detection Limit</b>	Antibody detection limit dilution 1:32000.
<b>Western Blot</b>	Approx 18kDa band observed in Mouse Testis lysates (calculated MW of 18.6kDa according to Human NP_001271.1 and Mouse NP_031731.1). Recommended concentration: 0.01-0.03µg/ml. Primary incubation was 1 hour.
<b>Application Type</b>	Pep-ELISA, WB, IHC

## DOCUMENTS

- [Data Sheet](#)

## GALLERY IMAGES

