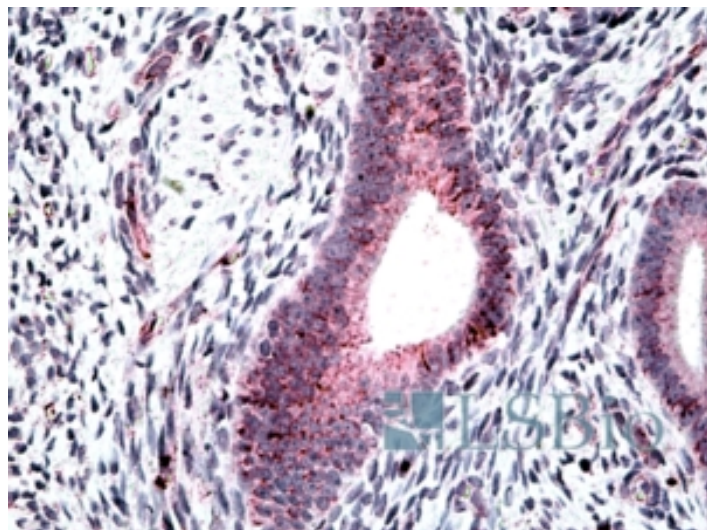


GOAT ANTI-CLCN2 ANTIBODY

SKU: EB09984



SPECIFICATIONS

Formulation Supplied at 0.5 mg/ml in Tris saline, 0.02% sodium azide, pH7.3 with 0.5% bovine serum albumin.

Unit Size 100 µg

Storage Instructions Aliquot and store at -20°C. Minimize freezing and thawing.

Synonym / Alias Names CLCN2|Epilepsy, idiopathic generalized, susceptibility to|EJM8|EJM6|EGMA|EGI3|EGI11|ECA3|ECA2|CLC2|CIC-2|chloride channel 2

Accession ID NP_004357.3

Blocking Peptide EBP09984

Immunogen Peptide with sequence SEKLESCEKRKLKR, from the internal region of the protein sequence according to NP_004357.3.

Product Comments This antibody is expected to recognize all reported isoforms (NP_004357.3; NP_001164558.1; NP_001164559.1; NP_001164560.1).

Peptide Sequence SEKLESCEKRKLKR

Purification Method Purified from goat serum by ammonium sulphate precipitation followed by antigen affinity chromatography using the immunizing peptide.

Shipping Instructions	Refrigerated
Predicted Species	Human, Mouse, Rat
Reactive Species	Human
Human Gene ID	1181
Mouse Gene ID	12724
Rat Gene ID	29232
Product Grade	https://prod-vector-labs-pimcore-assets.s3.us-east-1.amazonaws.com/assets/products/image/elite_medium.png
IHC Results	Paraffin embedded Human Uterus and Brain (Cortex). Recommended concentration: 3-8µg/ml.
ELISA	
Detection Limit	Antibody detection limit dilution 1:64000.
Application Type	Pep-ELISA, IHC

DOCUMENTS

- [Data Sheet](#)

GALLERY IMAGES

