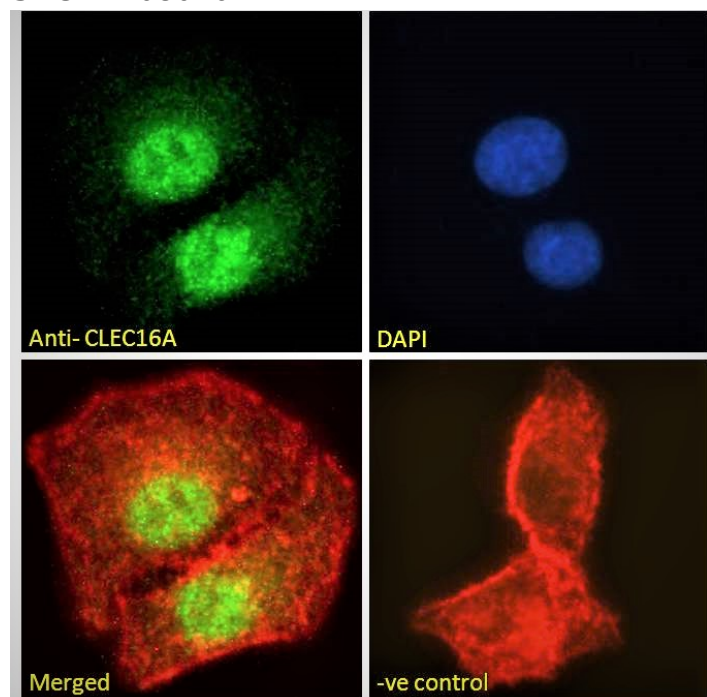


GOAT ANTI-CLEC16A ANTIBODY

SKU: EB08076



SPECIFICATIONS

Formulation Supplied at 0.5 mg/ml in Tris saline, 0.02% sodium azide, pH7.3 with 0.5% bovine serum albumin.

Unit Size 100 µg

Storage Instructions Aliquot and store at -20°C. Minimize freezing and thawing.

Synonym /

Alias MGC111457|KIAA0350|Gop-1|C-type lectin domain family 16, member A|CLEC16A

Names

Usage Summary **Immunofluorescence:** Strong expression of the protein seen in the nuclei and weak expression seen in the cytoplasm of A549 cells. Recommended concentration: 10µg/ml. **Flow Cytometry:** Flow cytometric analysis of A549 cells. Recommended concentration: 10ug/ml.

Accession ID NP_056041.1; NP_001230332.1

Blocking Peptide EBP08076

Immunogen	Peptide with sequence C-SLENQDKGGERP, from the internal region of the protein sequence according to NP_056041.1; NP_001230332.1.
Peptide Sequence	C-SLENQDKGGERP
Purification Method	Purified from goat serum by ammonium sulphate precipitation followed by antigen affinity chromatography using the immunizing peptide.
Shipping Instructions	Refrigerated
Predicted Species	Human, Mouse, Rat
Reactive Species	Human
Human Gene ID	23274
Mouse Gene ID	74374
Product Grade	https://prod-vector-labs-pimcore-assets.s3.us-east-1.amazonaws.com/assets/products/image/elite_medium.png
ELISA Detection Limit	Antibody detection limit dilution 1:16000.
Western Blot	Preliminary experiments gave an approx 70kDa band in Rat Testis lysates after 0.5µg/ml antibody staining. This band was successfully blocked by incubation with the immunizing peptide. Primary incubation 1 hour at room temperature. Please note that we currently cannot find an explanation in the literature for this band, given the calculated size of 115kDa according to Rat XP_213209.4.
Application Type	Pep-ELISA, IF, FC

DOCUMENTS

- [Data Sheet](#)

GALLERY IMAGES

