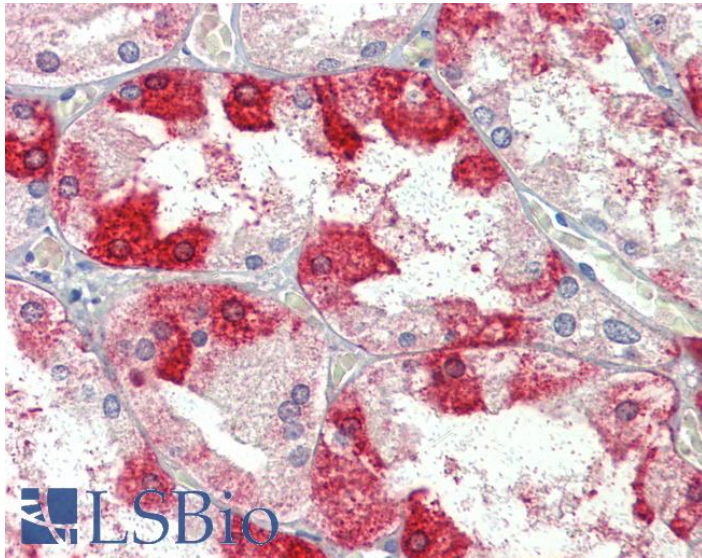




# GOAT ANTI-CLTC ANTIBODY

SKU: EB09305



## SPECIFICATIONS

**Formulation** Supplied at 0.5 mg/ml in Tris saline, 0.02% sodium azide, pH7.3 with 0.5% bovine serum albumin.

**Unit Size** 100 µg

**Storage Instructions** Aliquot and store at -20°C. Minimize freezing and thawing.

**Synonym / Alias Names** clathrin, heavy polypeptide-like 2|clathrin, heavy polypeptide (Hc)|clathrin heavy chain 1|KIAA0034|Hc|CLTCL2|CLH-17|CHC17|clathrin, heavy chain (Hc)|CLTC

**Usage Summary** **Immunofluorescence:** This antibody has been successfully used in IF on Human: Marinval N et al. (2016) PMID: 27763505.

**Accession ID** NP\_004850.1; NP\_001275582.1

**Blocking Peptide** EBP09305

**Immunogen** Peptide with sequence C-ESLRKEEEQATETQ, from the internal region (near C Terminus) of the protein sequence according to NP\_004850.1; NP\_001275582.1.

**Peptide Sequence** C-ESLRKEEEQATETQ

**Purification Method** Purified from goat serum by ammonium sulphate precipitation followed by antigen affinity chromatography using the immunizing peptide.



<b>Shipping Instructions</b>	Refrigerated
<b>Predicted Species</b>	Human, Mouse, Rat, Dog, Cow
<b>Reactive Species</b>	Human
<b>Human Gene ID</b>	1213
<b>Product Grade</b>	<a href="https://prod-vector-labs-pimcore-assets.s3.us-east-1.amazonaws.com/assets/products/image/elite_medium.png">https://prod-vector-labs-pimcore-assets.s3.us-east-1.amazonaws.com/assets/products/image/elite_medium.png</a>
<b>IHC Results</b>	In paraffin embedded Human Adrenal Gland shows strong vesicular staining in the zona glomerulosa. Paraffin embedded Human Kidney. Recommended concentration: 3.75µg/ml.
<b>ELISA</b>	
<b>Detection Limit</b>	Antibody detection limit dilution 1:32000.
<b>Application Type</b>	Pep-ELISA, IHC, IF

## SELECTED REFERENCES

[{"pmid": 27763505, "intro": "**This antibody has been successfully used in IF on Human:**", "title": "Identification of a Pro-Angiogenic Potential and Cellular Uptake Mechanism of a LMW Highly Sulfated Fraction of Fucoidan from Ascophyllum nodosum", "author": "Marinval N, Saboural P, Haddad O, Maire M, Bassand K, Geinguenaud F, Djaker N, Ben Akrouk K, Lamy de la Chapelle M, Robert R, Oudar O, Guyot E, Laguillier-Morizot C, Sutton A, Chauvierre C, Chaubet F, Charnaux N, Hlawaty H", "journal": "Mar Drugs. 2016 Oct 17;14(10)"}]

## DOCUMENTS

- [Data Sheet](#)

## GALLERY IMAGES



[www.everestbiotech.com](http://www.everestbiotech.com)

Email: [customerservice@vectorlabs.com](mailto:customerservice@vectorlabs.com)

Telephone: [\(650\) 697-3600](tel:(650)697-3600)

