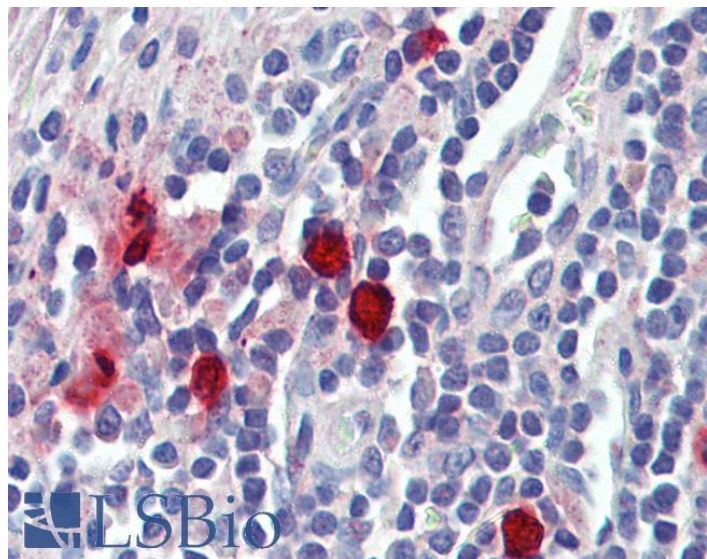


GOAT ANTI-CMA1 ANTIBODY

SKU: EB08876



SPECIFICATIONS

Formulation Supplied at 0.5 mg/ml in Tris saline, 0.02% sodium azide, pH7.3 with 0.5% bovine serum albumin.

Unit Size 100 µg

Storage Instructions Aliquot and store at -20°C. Minimize freezing and thawing.

Synonym / Alias Names mast cell protease I|chymase, mast cell|chymase, heart|chymase 1 preproprotein transcript I|chymase 1 preproprotein transcript E|MGC119891|MGC119890|MCT1|CYH|chymase 1, mast cell|CMA1

Accession ID NP_001827.1

Blocking Peptide EBP08876

Immunogen Peptide with sequence C-QFRHPKYNTSTLHHD, from the internal region of the protein sequence according to NP_001827.1.

Peptide Sequence C-QFRHPKYNTSTLHHD

Purification Method Purified from goat serum by ammonium sulphate precipitation followed by antigen affinity chromatography using the immunizing peptide.

Shipping Instructions Refrigerated

Predicted Species	Human
Reactive Species	Human
Human Gene ID	1215
Product Grade	https://prod-vector-labs-pimcore-assets.s3.us-east-1.amazonaws.com/assets/products/image/elite_medium.png
IHC Results	Paraffin embedded Human Testis and Tonsil (Mast cells). Recommended concentration: 1.5µg/ml.
ELISA	
Detection Limit	Antibody detection limit dilution 1:128000.
Western Blot	In transfected HEK293 transiently expressing full-length Human CMA1 (myc and DYKDDDDK tagged), a band of approx. 35kDa was observed. No bands were observed in mock-transfected HEK293 and the same band was observed using anti-DYKDDDDK tag antibody. Recommended concentration, 0.5-1µg/ml.
Application Type	Pep-ELISA, WB-Trf, IHC

DOCUMENTS

- [Data Sheet](#)

GALLERY IMAGES

