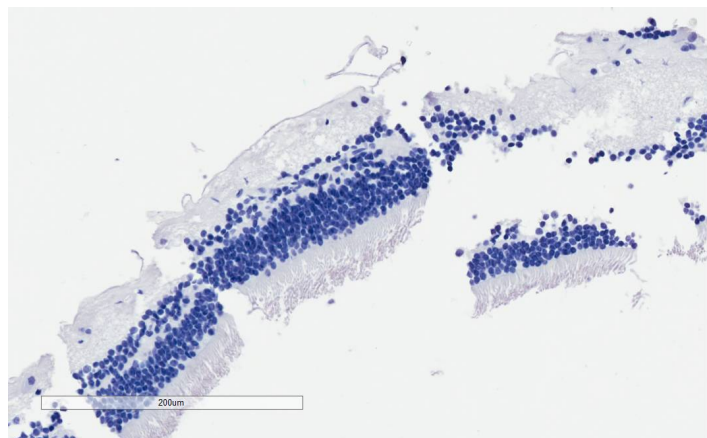


GOAT ANTI-CNGB3 (AA175-186) ANTIBODY

SKU: EB12707



SPECIFICATIONS

Formulation Supplied at 0.5 mg/ml in Tris saline, 0.02% sodium azide, pH7.3 with 0.5% bovine serum albumin.

Unit Size 100 µg

Storage Instructions Aliquot and store at -20°C. Minimize freezing and thawing.

Synonym / Alias cyclic nucleotide-gated cation channel modulatory subunit|cyclic nucleotide-gated cation channel beta-3|cone photoreceptor cGMP-gated cation channel beta-subunit|CNG channel beta-3|ACHM1|cyclic nucleotide gated channel beta 3|CNGB3

Accession ID NP_061971.3

Blocking Peptide EBP12707

Immunogen Peptide with sequence C-ESDDKPTEHYR, from the internal region of the protein sequence according to NP_061971.3.

Peptide Sequence C-ESDDKPTEHYR

Purification Method Purified from goat serum by ammonium sulphate precipitation followed by antigen affinity chromatography using the immunizing peptide.

Shipping Instructions Refrigerated

Predicted Species Human

Reactive Species Human

Human Gene ID	54714
Product Grade	https://prod-vector-labs-pimcore-assets.s3.us-east-1.amazonaws.com/assets/products/image/elite_medium.png
IHC Results	In paraffin embedded Human Retina shows primarily staining of the pigmented epithelial cells. Recommended concentration: 2-4µg/ml.
ELISA	
Detection Limit	Antibody detection limit dilution 1:8000.
Application Type	Pep-ELISA, IHC

DOCUMENTS

- [Data Sheet](#)

GALLERY IMAGES

