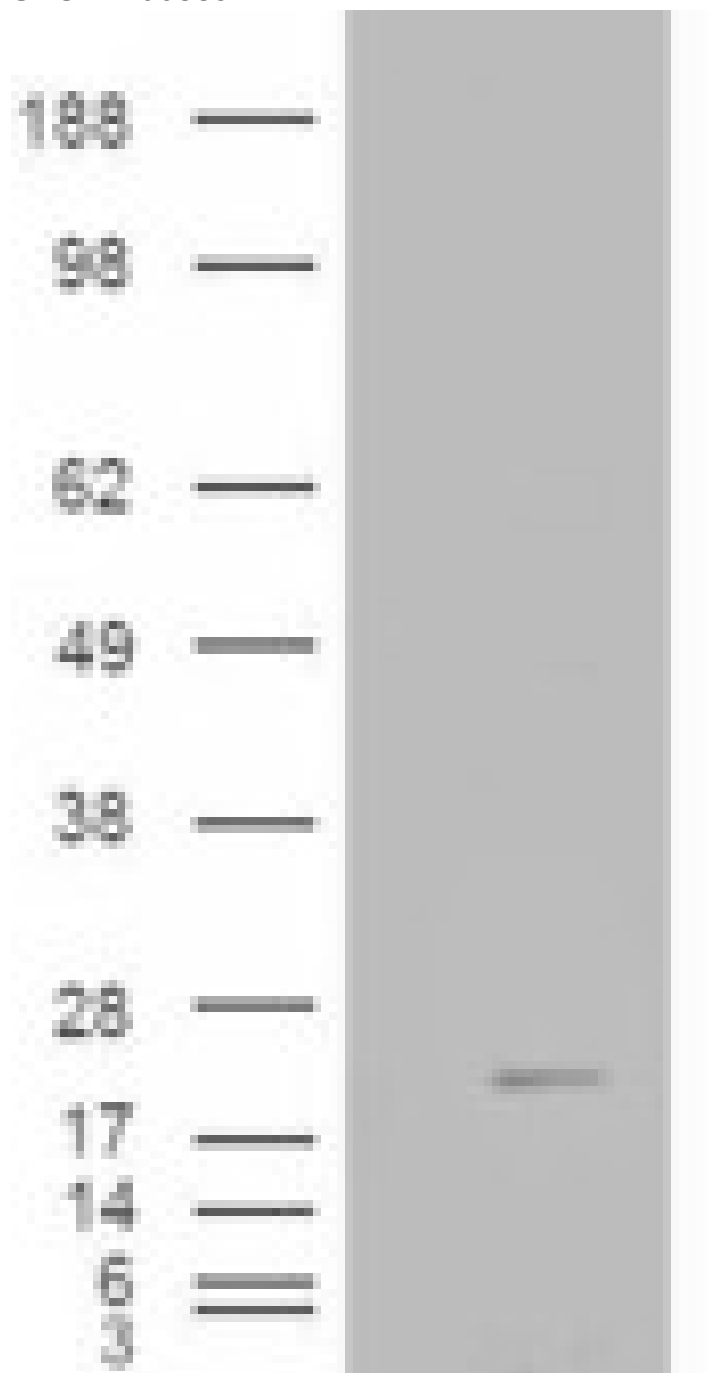


GOAT ANTI-COFILIN 2 (MUSCLE) ANTIBODY

SKU: EB06889



SPECIFICATIONS

| | |
|------------------------------|---|
| Formulation | Supplied at 0.5 mg/ml in Tris saline, 0.02% sodium azide, pH7.3 with 0.5% bovine serum albumin. |
| Unit Size | 100 µg |
| Storage | Aliquot and store at -20°C. Minimize freezing and thawing. |
| Instructions | |
| Synonym / | |
| Alias | cofilin 2 NEM7 CFL2 HGNC:1875 cofilin 2 (muscle) |
| Names | |
| Accession ID | NP_068733.1; NP_619579.1 |
| Blocking Peptide | EBP06889 |
| Immunogen | Peptide with sequence C-DIKDRSTLGEK, from the C Terminus of the protein sequence according to NP_068733.1; NP_619579.1. |
| Product Comments | This antibody is expected to recognise both reported isoforms (NP_068733 and NP_619579) |
| Peptide Sequence | C-DIKDRSTLGEK |
| Purification Method | Purified from goat serum by ammonium sulphate precipitation followed by antigen affinity chromatography using the immunizing peptide. |
| Shipping Instructions | Refrigerated |
| Predicted Species | Human, Mouse, Rat, Dog, Pig |
| Reactive Species | Human, Rat |
| Human Gene ID | 1073 |
| Product Grade | https://prod-vector-labs-pimcore-assets.s3.us-east-1.amazonaws.com/assets/products/image/elite_medium.png |
| IHC Results | Paraffin embedded Human Heart. Recommended concentration: 3.75µg/ml. |
| ELISA | |
| Detection Limit | Antibody detection limit dilution 1:128000. |
| Western Blot | Approx 18kDa band observed in Human Skeletal Muscle lysates and in Rat Heart lysates (calculated MW of 18.7kDa according to NP_068733.1 and NP_619579.1). Recommended concentration: 0.01-0.03µg/ml. |
| Application Type | Pep-ELISA, WB, IHC |

DOCUMENTS

- [Data Sheet](#)

GALLERY IMAGES

