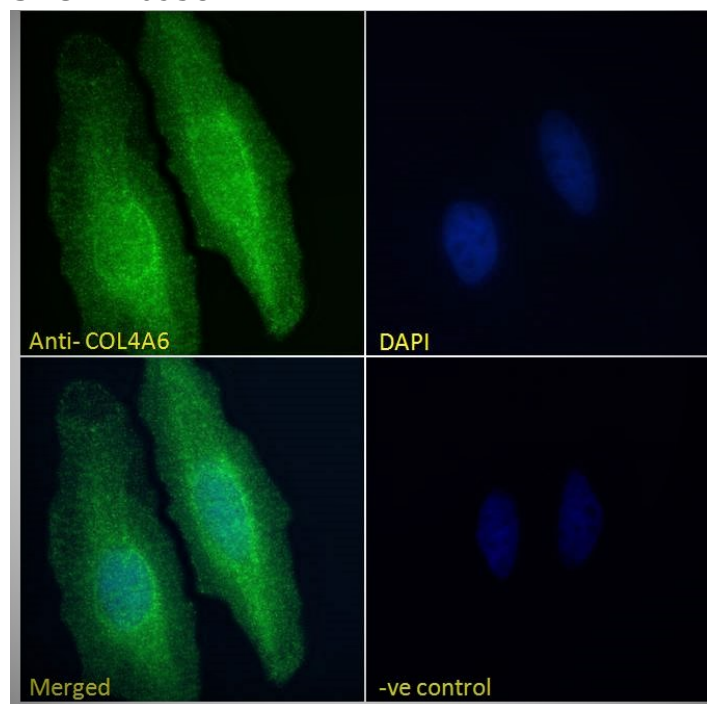


# GOAT ANTI-COL4A6 ANTIBODY

SKU: EB09587



## SPECIFICATIONS

**Formulation** Supplied at 0.5 mg/ml in Tris saline, 0.02% sodium azide, pH7.3 with 0.5% bovine serum albumin.

**Unit Size** 100 µg

**Storage Instructions** Aliquot and store at -20°C. Minimize freezing and thawing.

**Synonym / Alias** type IV alpha 6 collagen[dj889N15.4 (Collagen Alpha 6(IV))|collagen of basement membrane, alpha-6|collagen alpha 6 type IV|collagen IV, alpha-6 polypeptide|OTTHUMP00000023835|OTTHUMP00000023834|MGC88184|collagen, type IV, alpha 6|COL4A6

**Names** **Immunofluorescence:** Strong expression of the protein seen in the endoplasmic reticulum of HeLa and in the endoplasmic reticulum and membranes of U2OS cells. Recommended concentration: 10µg/ml. **Flow Cytometry:** Flow cytometric analysis of HeLa cells. Recommended concentration: 10ug/ml.

**Accession ID** NP\_001838.2; NP\_378667.1; NP\_001274687.1; NP\_001274688.1; NP\_001274689.1

**Blocking Peptide** EBP09587

<b>Immunogen</b>	Peptide with sequence C-PSPEFETETLHNKES, from the internal region of the protein sequence according to NP_001838.2; NP_378667.1; NP_001274687.1; NP_001274688.1; NP_001274689.1.
<b>Product</b>	This antibody is expected to recognize reported isoforms NP_001838.2 (iso A),; NP_378667.1 (iso B),, NP_001274687.1 (iso 3),NP_001274688.1 (iso 4) and NP_001274689.1 (iso 5).
<b>Comments</b>	
<b>Peptide Sequence</b>	C-PSPEFETETLHNKES
<b>Purification Method</b>	Purified from goat serum by ammonium sulphate precipitation followed by antigen affinity chromatography using the immunizing peptide.
<b>Shipping Instructions</b>	Refrigerated
<b>Predicted Species</b>	Human
<b>Reactive Species</b>	Human
<b>Human Gene ID</b>	1288
<b>Product Grade</b>	<a href="https://prod-vector-labs-pimcore-assets.s3.us-east-1.amazonaws.com/assets/products/image/elite_medium.png">https://prod-vector-labs-pimcore-assets.s3.us-east-1.amazonaws.com/assets/products/image/elite_medium.png</a>
<b>ELISA</b>	
<b>Detection Limit</b>	Antibody detection limit dilution 1:32000.
<b>Application Type</b>	Pep-ELISA, IF, FC

## DOCUMENTS

- [Data Sheet](#)

## GALLERY IMAGES

