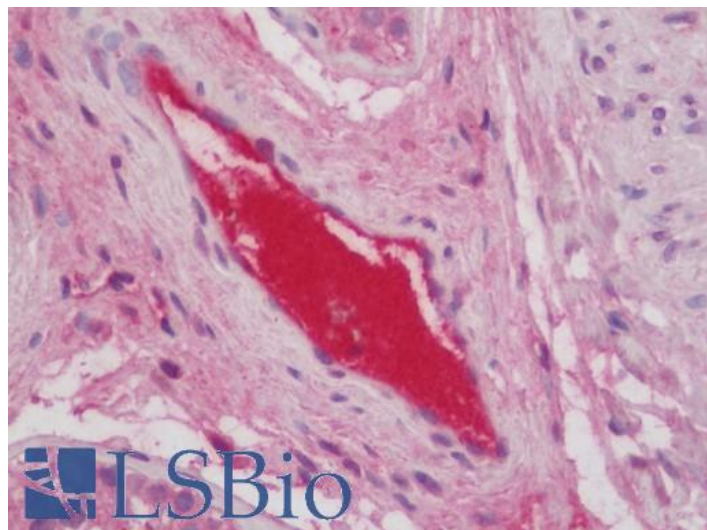


# GOAT ANTI-COMPLEMENT C3 (AA1580-1592) ANTIBODY

**SKU:** EB11703



## SPECIFICATIONS

**Formulation** Supplied at 0.5 mg/ml in Tris saline, 0.02% sodium azide, pH7.3 with 0.5% bovine serum albumin.

**Unit Size** 100 µg

**Storage Instructions** Aliquot and store at -20°C. Minimize freezing and thawing.

**Synonym / Alias Names** OTTHUMP00000197086|CPAMD1|complement component C3|complement component 3|complement C3|C3 and PZP-like alpha-2-macroglobulin domain-containing protein 1|C3|ASP|ARMD9|AHUS5|acylation-stimulating protein cleavage product

**Accession ID** NP\_000055.2

**Blocking Peptide** EBP11703

**Immunogen** Peptide with sequence QQRTFISPIKCRE, from the C Terminus of the protein sequence according to NP\_000055.2.

**Product Comments** This antibody is expected to recognize the C3 alpha chain, C3b alpha' chain and the C3c alpha' chain fragment 2.

**Peptide Sequence** QQRTFISPIKCRE

**Purification Method** Purified from goat serum by ammonium sulphate precipitation followed by antigen affinity chromatography using the immunizing peptide.

<b>Shipping Instructions</b>	Refrigerated
<b>Predicted Species</b>	Human
<b>Reactive Species</b>	Human
<b>Human Gene ID</b>	718
<b>Product Grade</b>	<a href="https://prod-vector-labs-pimcore-assets.s3.us-east-1.amazonaws.com/assets/products/image/elite_medium.png">https://prod-vector-labs-pimcore-assets.s3.us-east-1.amazonaws.com/assets/products/image/elite_medium.png</a>
<b>IHC Results</b>	Paraffin embedded Human Placenta and Testis. Recommended concentration: 5µg/ml.
<b>ELISA</b>	
<b>Detection Limit</b>	Antibody detection limit dilution 1:128000.
<b>Application Type</b>	Pep-ELISA, IHC

## DOCUMENTS

- [Data Sheet](#)

## GALLERY IMAGES

