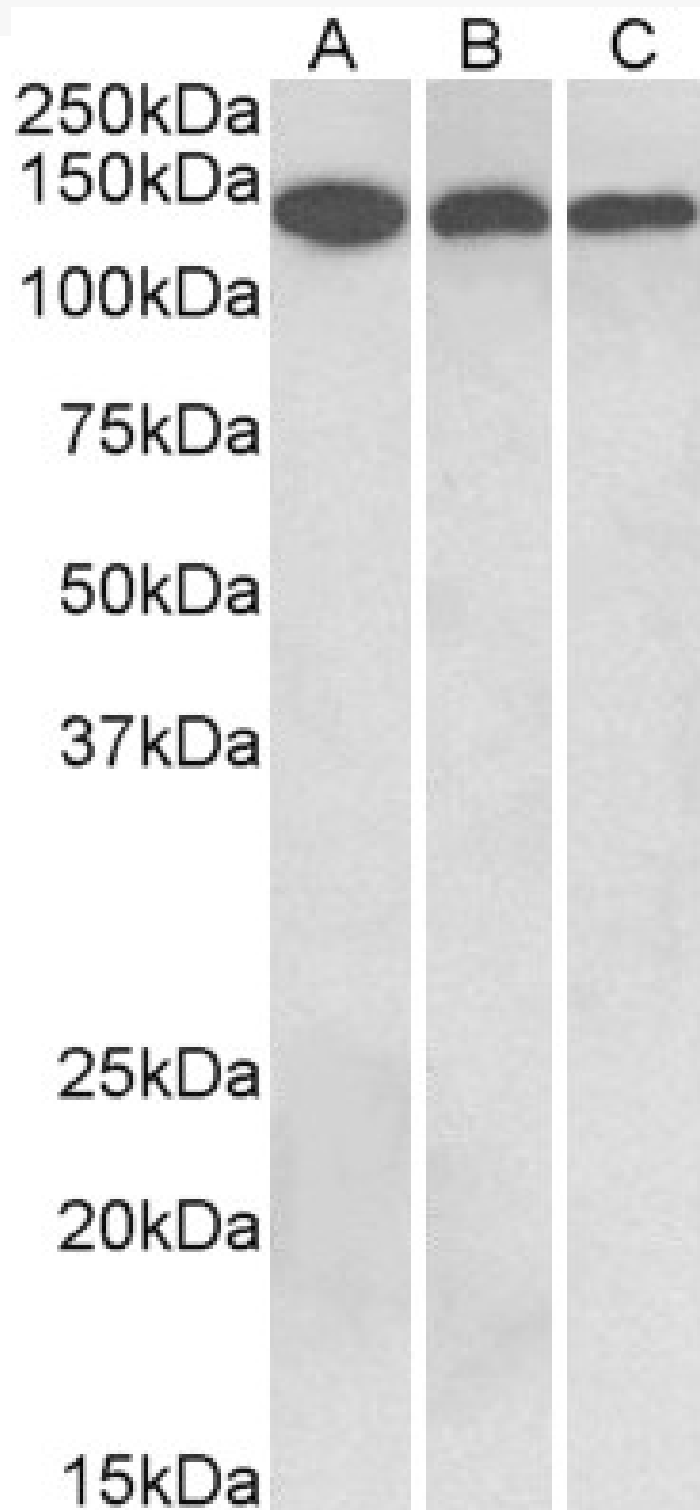


# GOAT ANTI-CONTACTIN 1 ANTIBODY

**SKU:** EB12273



## SPECIFICATIONS

<b>Formulation</b>	Supplied at 0.5 mg/ml in Tris saline, 0.02% sodium azide, pH7.3 with 0.5% bovine serum albumin.
<b>Unit Size</b>	100 µg
<b>Storage</b>	Aliquot and store at -20°C. Minimize freezing and thawing.
<b>Instructions</b>	
<b>Synonym /</b>	
<b>Alias</b>	neural cell surface protein F3 glycoprotein gP135 contactin-1 GP135 F3 contactin 1 CNTN1
<b>Names</b>	
<b>Accession ID</b>	NP_001834.2; NP_778203.1; NP_001242992.1
<b>Blocking Peptide</b>	EBP12273
<b>Immunogen</b>	Peptide with sequence C-ENIRGKDKHQAR, from the internal region of the protein sequence according to NP_001834.2; NP_778203.1; NP_001242992.1.
<b>Product</b>	This antibody is expected to recognize all reported isoforms (NP_001834.2; NP_778203.1; NP_001242992.1).
<b>Comments</b>	Reported variants represent identical protein: NP_001242993.1, NP_001242992.1.
<b>Peptide Sequence</b>	C-ENIRGKDKHQAR
<b>Purification Method</b>	Purified from goat serum by ammonium sulphate precipitation followed by antigen affinity chromatography using the immunizing peptide.
<b>Shipping Instructions</b>	Refrigerated
<b>Predicted Species</b>	Human, Mouse, Rat, Pig
<b>Reactive Species</b>	Human, Mouse, Rat, Pig
<b>Human Gene ID</b>	1272
<b>Mouse Gene ID</b>	12805
<b>Rat Gene ID</b>	117258
<b>Product Grade</b>	<a href="https://prod-vector-labs-pimcore-assets.s3.us-east-1.amazonaws.com/assets/products/image/elite_medium.png">https://prod-vector-labs-pimcore-assets.s3.us-east-1.amazonaws.com/assets/products/image/elite_medium.png</a>
<b>IHC Results</b>	Paraffin embedded Human Brain (Cerebellum). Recommended concentration: 5µg/ml.
<b>ELISA</b>	
<b>Detection Limit</b>	Antibody detection limit dilution 1:32000.
<b>Western Blot</b>	Approx 140kDa band observed in Human, Mouse, Rat and Pig Brain lysates (calculated MW of 113kDa according to NP_001834.2). The observed molecular weight corresponds to the glycosylated form. Recommended concentration: 0.3-1µg/ml. Primary incubation was 1 hour.
<b>Application Type</b>	Pep-ELISA, WB, IHC

## DOCUMENTS

- [Data Sheet](#)

## GALLERY IMAGES

