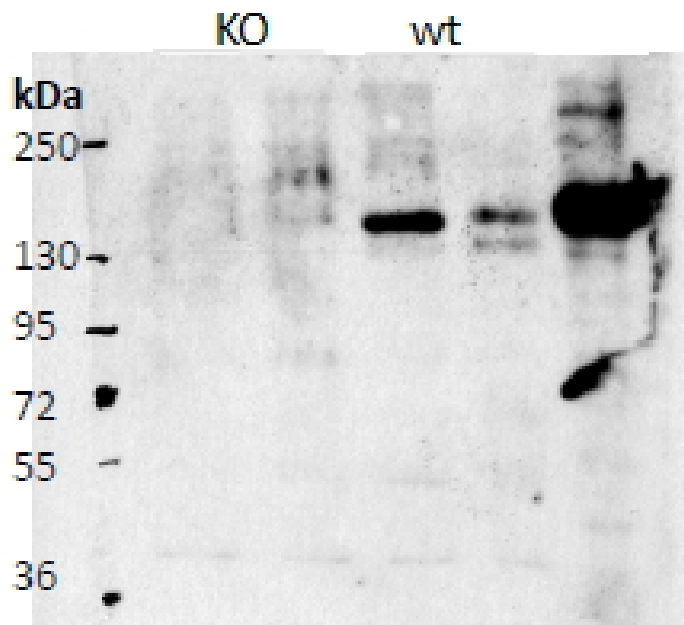


GOAT ANTI-CONTACTIN 4 / BIG-2 (MOUSE AA160-172) ANTIBODY

SKU: EB11768



SPECIFICATIONS

Formulation Supplied at 0.5 mg/ml in Tris saline, 0.02% sodium azide, pH7.3 with 0.5% bovine serum albumin.

Unit Size 100 µg

Storage Instructions Aliquot and store at -20°C. Minimize freezing and thawing.

Synonym / Alias Names 9630050B05|Axcam|axonal-associated cell adhesion molecule|BIG-2|brain-derived immunoglobulin superfamily molecule|brain-derived immunoglobulin superfamily protein 2|Cntn4|contactin 4|contactin-4

Accession ID NP_001103219.1; NP_766592.2

Blocking Peptide EBP11768

Immunogen Peptide with sequence C-RRADGKPIARK, from the internal region of the protein sequence according to NP_001103219.1; NP_766592.2.

Product	This antibody is expected to recognize both reported isoforms (NP_001103219.1; NP_766592.2). Reported
Comments	variants represent identical protein: NP_766592.2, NP_001103221.1
Peptide Sequence	C-RRADGKPIARK
Purification Method	Purified from goat serum by ammonium sulphate precipitation followed by antigen affinity chromatography using the immunizing peptide.
Shipping Instructions	Refrigerated
Predicted Species	Human, Mouse, Rat, Dog
Reactive Species	Mouse
Human Gene ID	152330
Mouse Gene ID	269784
Rat Gene ID	116658
Product Grade	https://prod-vector-labs-pimcore-assets.s3.us-east-1.amazonaws.com/assets/products/image/elite_medium.png
ELISA Detection Limit	Antibody detection limit dilution 1:128000.
Western Blot	Approx 150kDa band observed in Mouse Brain lysates and not in the same lysates from the KO mice (calculated MW of 113kDa according to NP_001103219.1). Recommended concentration: 0.5-1.5µg/ml.
Application Type	Pep-ELISA, WB

DOCUMENTS

- [Data Sheet](#)

GALLERY IMAGES

