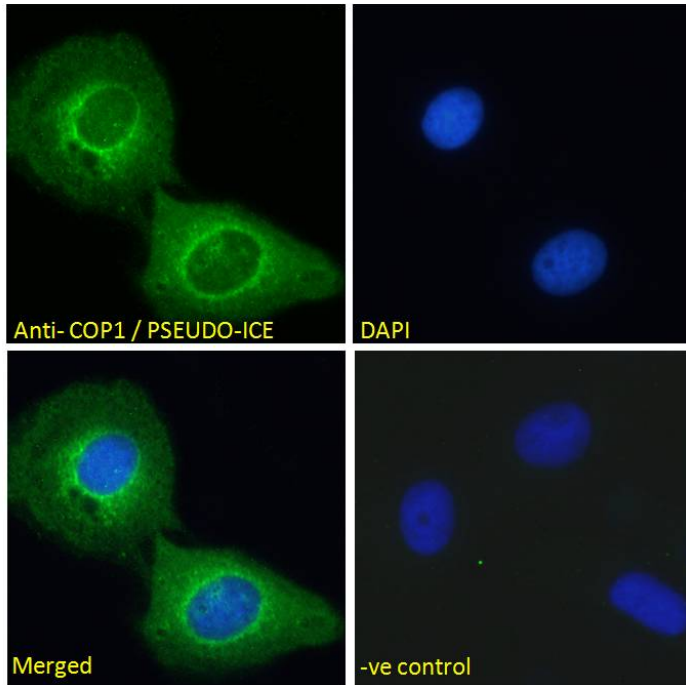




# GOAT ANTI-COP1 / PSEUDO-ICE (ISOFORM 2) ANTIBODY

SKU: EB05255



## SPECIFICATIONS

**Formulation** Supplied at 0.5 mg/ml in Tris saline, 0.02% sodium azide, pH7.3 with 0.5% bovine serum albumin.

**Unit Size** 100 µg

**Storage Instructions** Aliquot and store at -20°C. Minimize freezing and thawing.

**Synonym / Alias Names** CARD16|COP|CARD only protein|PSEUDO-ICE|COP1|caspase-1 dominant-negative inhibitor pseudo-ICE|pseudo interleukin-1beta converting enzyme|caspase recruitment domain family, member 16

**Usage Summary** **Immunofluorescence:** Strong expression of the protein seen in the nuclei of U2OS cells. Recommended concentration: 10µg/ml. **Flow Cytometry:** Flow cytometric analysis of A549 cells. Recommended concentration: 10ug/ml.

**Accession ID** NP\_443121.1

**Blocking Peptide** EBP05255



<b>Immunogen</b>	Peptide with sequence C-ETLGLSAGPIPGN, from the C Terminus of the protein sequence according to NP_443121.1.
<b>Product Comments</b>	This antibody is expected to recognize isoform 2 (NP_443121.1) only. In addition there may be cross-reaction with INCA (GeneID 440068; NP_001007233.1).
<b>Peptide Sequence</b>	C-ETLGLSAGPIPGN
<b>Purification Method</b>	Purified from goat serum by ammonium sulphate precipitation followed by antigen affinity chromatography using the immunizing peptide.
<b>Shipping Instructions</b>	Refrigerated
<b>Predicted Species</b>	Human
<b>Reactive Species</b>	Human
<b>Human Gene ID</b>	114769
<b>Product Grade</b>	<a href="https://prod-vector-labs-pimcore-assets.s3.us-east-1.amazonaws.com/assets/products/image/elite_medium.png">https://prod-vector-labs-pimcore-assets.s3.us-east-1.amazonaws.com/assets/products/image/elite_medium.png</a>
<b>ELISA Detection Limit</b>	Antibody detection limit dilution 1:4000.
<b>Application Type</b>	Pep-ELISA, IF, FC

## DOCUMENTS

- [Data Sheet](#)

## GALLERY IMAGES

