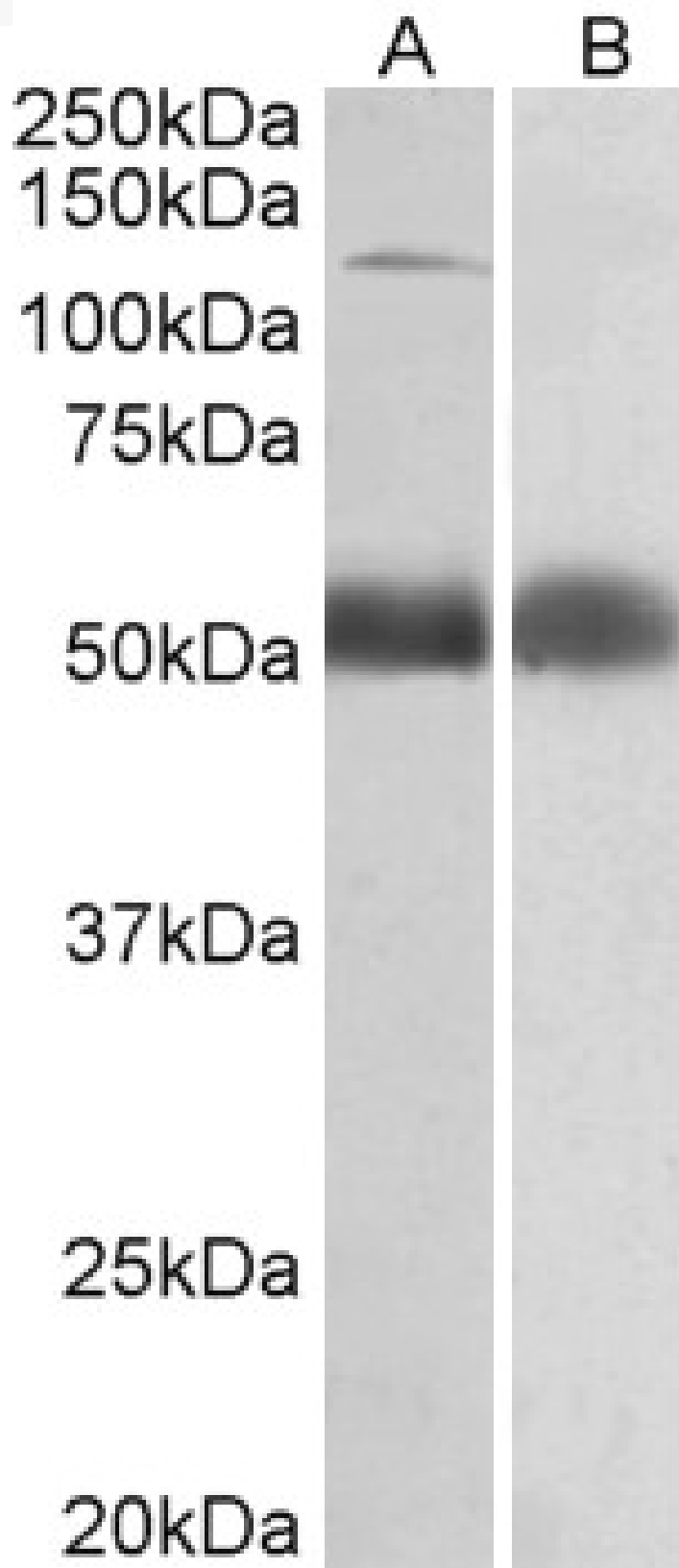


GOAT ANTI-COPA ANTIBODY

SKU: EB10513



SPECIFICATIONS

Formulation Supplied at 0.5 mg/ml in Tris saline, 0.02% sodium azide, pH7.3 with 0.5% bovine serum albumin.

Unit Size 100 µg

Storage Instructions Aliquot and store at -20°C. Minimize freezing and thawing.

Synonym /

Alias Names alpha coat protein|coatomer protein complex, subunit alpha|FLJ26320|HEP-COP|xenin|COPA

Accession ID NP_001091868.1; NP_004362.2

Blocking Peptide EBP10513

Immunogen Peptide with sequence CTRASNLENST, from the internal region of the protein sequence according to NP_001091868.1; NP_004362.2.

Product Comments This antibody is expected to recognize both reported isoforms (NP_001091868.1; NP_004362.2).

Peptide Sequence CTRASNLENST

Purification Method Purified from goat serum by ammonium sulphate precipitation followed by antigen affinity chromatography using the immunizing peptide.

Shipping Instructions Refrigerated

Predicted Species Human, Mouse, Rat, Cow, Pig

Reactive Species Human

Human Gene ID 1314

Mouse Gene ID 12847

Rat Gene ID 304978

Product Grade https://prod-vector-labs-pimcore-assets.s3.us-east-1.amazonaws.com/assets/products/image/elite_medium.png

ELISA

Detection Limit Antibody detection limit dilution 1:1000.

Western Blot Approx 140kDa band observed in Human Prostate lysates (calculated MW of 138kDa according to NP_001091868.1 and NP_004362.2). Recommended concentration: 0.5-2µg/ml. An additional band of 52kDa was consistently observed, however this band was not blocked by the immunizing peptide and it is therefore a non-specific signal. We call for caution when used for other assays than Western blot.

Application Type Pep-ELISA, WB

DOCUMENTS

- [Data Sheet](#)

GALLERY IMAGES

