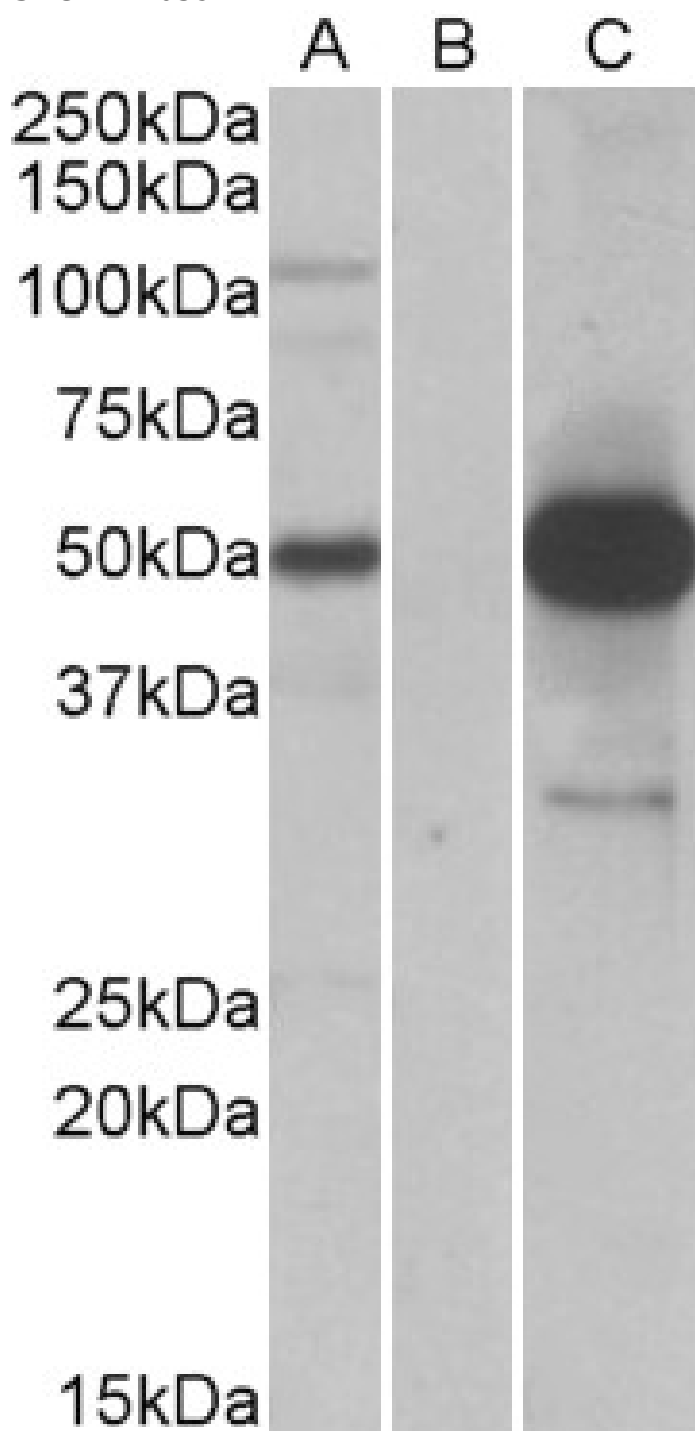


## GOAT ANTI-COPS3 ANTIBODY

SKU: EB10391



## SPECIFICATIONS

|                              |   |
|------------------------------|---|
| <b>Formulation</b>           | Supplied at 0.5 mg/ml in Tris saline, 0.02% sodium azide, pH7.3 with 0.5% bovine serum albumin.   |
| <b>Unit Size</b>             | 100 µg  |
| <b>Storage Instructions</b>  | Aliquot and store at -20°C. Minimize freezing and thawing.  |
| <b>Synonym / Alias Names</b> | COPS3 SGN3 JAB1-containing signalosome subunit 3 CSN3 COP9 constitutive photomorphogenic homolog subunit 3 (Arabidopsis) COP9 constitutive photomorphogenic homolog subunit 3 COP9 complex subunit 3  |
| <b>Accession ID</b>          | NP_003644.2   |
| <b>Blocking Peptide</b>      | EBP10391  |
| <b>Immunogen</b>             | Peptide with sequence C-SLYKKNIQRLT, from the internal region of the protein sequence according to NP_003644.2.   |
| <b>Peptide Sequence</b>      | C-SLYKKNIQRLT   |
| <b>Purification Method</b>   | Purified from goat serum by ammonium sulphate precipitation followed by antigen affinity chromatography using the immunizing peptide.   |
| <b>Shipping Instructions</b> | Refrigerated  |
| <b>Predicted Species</b>     | Human, Mouse, Rat, Dog, Cow   |
| <b>Reactive Species</b>      | Human   |
| <b>Human Gene ID</b>         | 8533  |
| <b>Mouse Gene ID</b>         | 26572   |
| <b>Rat Gene ID</b>           | 287367  |
| <b>Product Grade</b>         | <a href="https://prod-vector-labs-pimcore-assets.s3.us-east-1.amazonaws.com/assets/products/image/elite_medium.png">https://prod-vector-labs-pimcore-assets.s3.us-east-1.amazonaws.com/assets/products/image/elite_medium.png</a>   |
| <b>ELISA Detection Limit</b> | Antibody detection limit dilution 1:4000.   |
| <b>Western Blot</b>          | In transfected HEK293 transiently expressing full-length Human COPS3 (myc and DYKDDDDK tagged), a band of approx. 50kDa was observed. No bands were observed in mock-transfected HEK293 and the same band was observed using anti-DYKDDDDK tag antibody. Recommended concentration, 1-2µg/ml. |
| <b>Application Type</b>      | Pep-ELISA, WB-Trf   |

## DOCUMENTS

- [Data Sheet](#)

## GALLERY IMAGES

