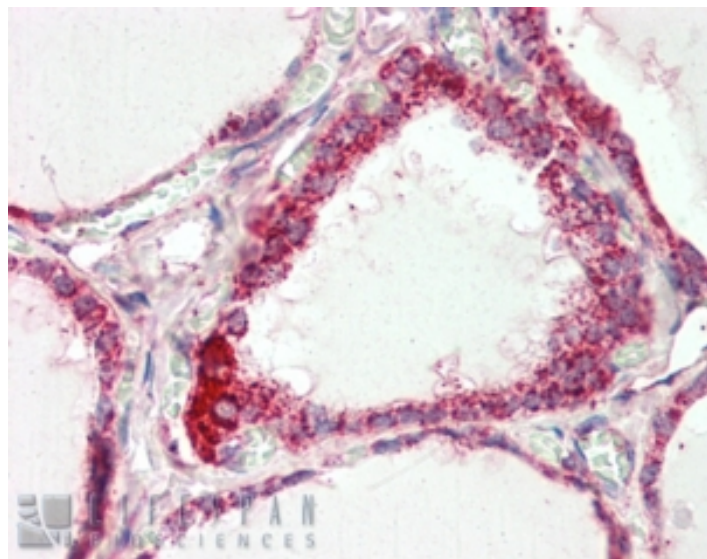


GOAT ANTI-COX4I1 ANTIBODY

SKU: EB07914



SPECIFICATIONS

Formulation Supplied at 0.5 mg/ml in Tris saline, 0.02% sodium azide, pH7.3 with 0.5% bovine serum albumin.

Unit Size 100 µg

Storage Instructions Aliquot and store at -20°C. Minimize freezing and thawing.

Synonym / Alias Names cytochrome c oxidase polypeptide IV|COXIV-1|COX4-1|MGC72016|COXIV|COX4|cytochrome c oxidase subunit IV isoform 1|COX4I1

Accession ID NP_001852.1; NP_001305726.1

Blocking Peptide EBP07914

Immunogen Peptide with sequence C-QGLASKWDYEKNE, from the C Terminus of the protein sequence according to NP_001852.1; NP_001305726.1.

Product Comments This antibody is expected to recognize reported isoforms 1 and 4 (NP_001852.1; NP_001305726.1). Reported variants represent identical protein: NP_001305715.1, NP_001852.1. This product may cross-react to COX4I2 (GeneID 84701).

Peptide Sequence C-QGLASKWDYEKNE

Purification Method	Purified from goat serum by ammonium sulphate precipitation followed by antigen affinity chromatography using the immunizing peptide.
Shipping Instructions	Refrigerated
Predicted Species	Human
Reactive Species	Human
Human Gene ID	1327
Product Grade	https://prod-vector-labs-pimcore-assets.s3.us-east-1.amazonaws.com/assets/products/image/elite_medium.png
IHC Results	Paraffin embedded Human Thyroid and Testis. Recommended concentration: 2.5µg/ml.
ELISA Detection Limit	Antibody detection limit dilution 1:4000.
Western Blot	Approx 18kDa band observed in human skeletal muscle lysates (calculated MW of 19.6kDa according to NP_001852.1). Recommended concentration: 0.01-0.03µg/ml.
Application Type	Pep-ELISA, WB, IHC

DOCUMENTS

- [Data Sheet](#)

GALLERY IMAGES

