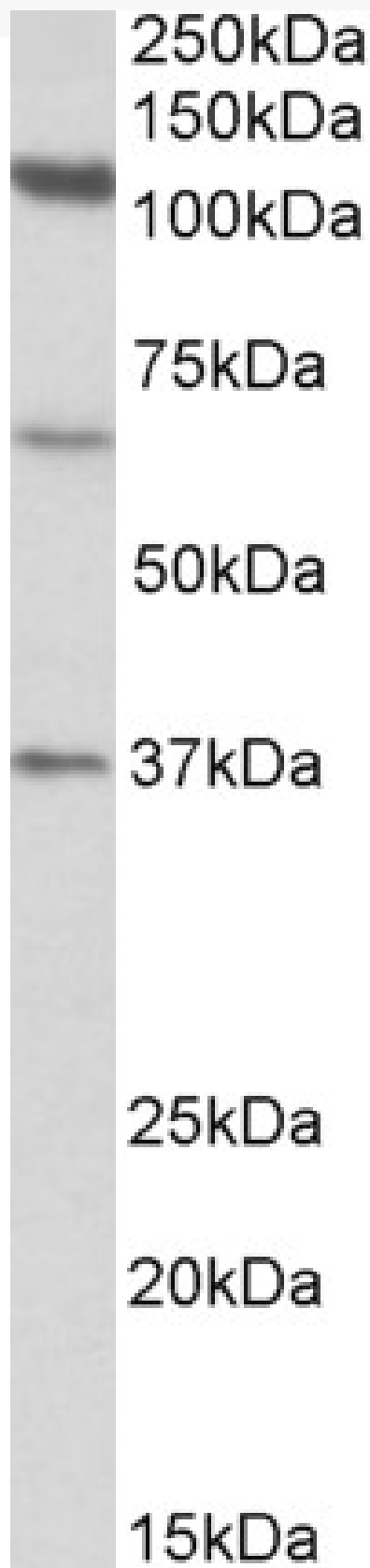


# GOAT ANTI-CP110 ANTIBODY

**SKU:** EB11290



## SPECIFICATIONS

<b>Formulation</b>	Supplied at 0.5 mg/ml in Tris saline, 0.02% sodium azide, pH7.3 with 0.5% bovine serum albumin.
<b>Unit Size</b>	100 µg
<b>Storage Instructions</b>	Aliquot and store at -20°C. Minimize freezing and thawing.
<b>Synonym / Alias Names</b>	centrosomal protein CP110  centrosomal protein of 110 kDa  Cep110  DKFZp781G1416  KIAA0419  OTTHUMP00000162162 CP110
<b>Accession ID</b>	NP_001185951.1; NP_055526.3
<b>Blocking Peptide</b>	EBP11290
<b>Immunogen</b>	Peptide with sequence CEKSLARIQEAS, from the N Terminus of the protein sequence according to NP_001185951.1; NP_055526.3.
<b>Product Comments</b>	This antibody is expected to recognize both reported isoforms (NP_001185951.1; NP_055526.3).
<b>Peptide Sequence</b>	CEKSLARIQEAS
<b>Purification Method</b>	Purified from goat serum by ammonium sulphate precipitation followed by antigen affinity chromatography using the immunizing peptide.
<b>Shipping Instructions</b>	Refrigerated
<b>Predicted Species</b>	Human
<b>Reactive Species</b>	Human
<b>Human Gene ID</b>	9738
<b>Product Grade</b>	<a href="https://prod-vector-labs-pimcore-assets.s3.us-east-1.amazonaws.com/assets/products/image/elite_medium.png">https://prod-vector-labs-pimcore-assets.s3.us-east-1.amazonaws.com/assets/products/image/elite_medium.png</a>
<b>ELISA Detection Limit</b>	Antibody detection limit dilution 1:32000.
<b>Western Blot</b>	Approx 110kDa band observed in Human Testis lysates (calculated MW of 113kDa according to NP_001185951.1). Recommended concentration: 0.3-1µg/ml. Additional bands of unknown identity were also consistently observed at 65kDa and 37kDa. These bands were successfully blocked by incubation with the immunizing peptide. We would appreciate any feedback from people in the field - have any such results been reported with other antibodies/lysates? Have any further splice variants/specific breakdown fragments been reported?
<b>Application Type</b>	Pep-ELISA, WB

## DOCUMENTS

- [Data Sheet](#)

## GALLERY IMAGES

