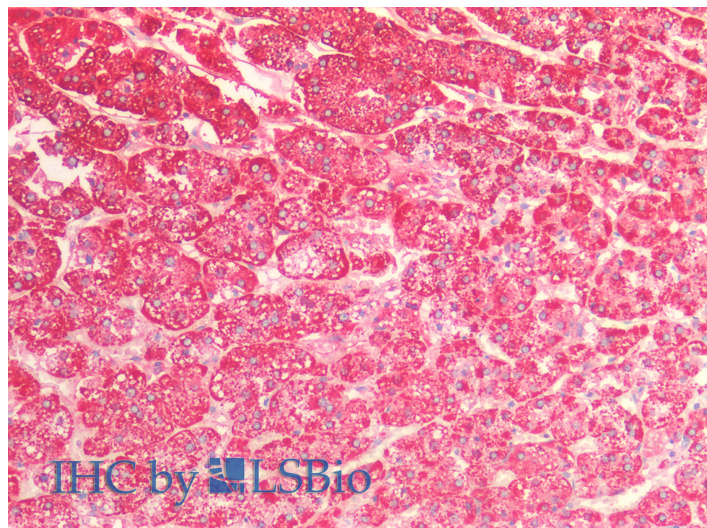


GOAT ANTI-CPN10 / HSPE1 (AA74-86) ANTIBODY

SKU: EB12836



SPECIFICATIONS

Formulation Supplied at 0.5 mg/ml in Tris saline, 0.02% sodium azide, pH7.3 with 0.5% bovine serum albumin.

Unit Size 100 µg

Storage Instructions Aliquot and store at -20°C. Minimize freezing and thawing.

Synonym / Alias Names heat shock 10kD protein 1 (chaperonin 10)|early-pregnancy factor|chaperonin 10|10 kDa heat shock protein, mitochondrial|10 kDa chaperonin|HSP10|GROES|EPF|CPN10|heat shock 10kDa protein 1|HSPE1

Accession ID NP_002148.1

Blocking Peptide EBP12836

Immunogen Peptide with sequence C-PEYGGTKVVLDDK, from the internal region of the protein sequence according to NP_002148.1.

Peptide Sequence C-PEYGGTKVVLDDK

Purification Method Purified from goat serum by ammonium sulphate precipitation followed by antigen affinity chromatography using the immunizing peptide.

Shipping Instructions Refrigerated

Predicted Species	Human, Mouse, Dog, Pig, Cow
Reactive Species	Human
Human Gene ID	3336
Mouse Gene ID	15528
Product Grade	https://prod-vector-labs-pimcore-assets.s3.us-east-1.amazonaws.com/assets/products/image/elite_medium.png
IHC Results	Paraffin embedded Human Adrenal Gland. Recommended concentration: 5µg/ml.
ELISA	
Detection Limit	Antibody detection limit dilution 1:128000.
Western Blot	Approx 10kDa band observed in lysates of cell lines HeLa and HepG2 (calculated MW of 10.9kDa according to NP_002148.1). Recommended concentration: 0.1-0.3µg/ml.
Application Type	Pep-ELISA, WB, IHC

DOCUMENTS

- [Data Sheet](#)

GALLERY IMAGES

