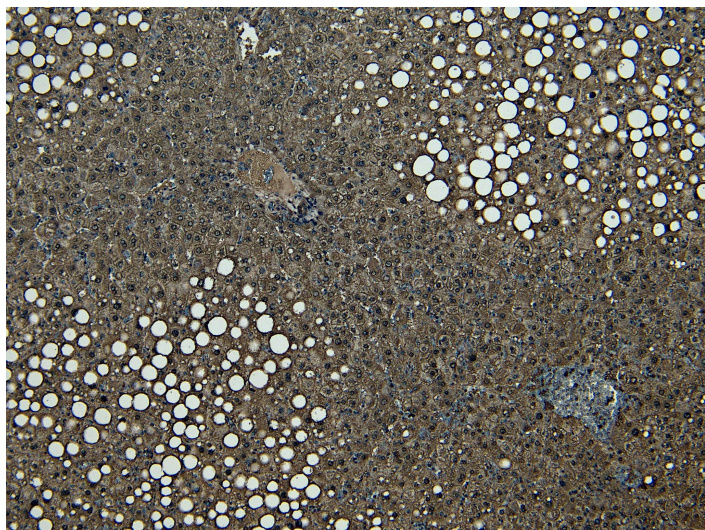


# GOAT ANTI-CPT1A ANTIBODY

**SKU:** EB07419



## SPECIFICATIONS

**Formulation** Supplied at 0.5 mg/ml in Tris saline, 0.02% sodium azide, pH7.3 with 0.5% bovine serum albumin.

**Unit Size** 100 µg

**Storage Instructions** Aliquot and store at -20°C. Minimize freezing and thawing.

**Synonym / Alias Names** carnitine palmitoyltransferase I, liver|carnitine palmitoyltransferase I|carnitine palmitoyltransferase 1A|L-CPT1|CPT1-L|CPT1|carnitine palmitoyltransferase 1A (liver)|CPT1A

**Accession ID** NP\_001867.2; NP\_001027017.1

**Blocking Peptide** EBP07419

**Immunogen** Peptide with sequence C-DPAQTVEQRLKLFK, from the internal region of the protein sequence according to NP\_001867.2; NP\_001027017.1.

**Product Comments** This antibody is expected to recognize both reported isoforms (NP\_001867.2; NP\_001027017.1) but is not expected to recognise CPT1B.

**Peptide Sequence** C-DPAQTVEQRLKLFK

**Purification Method** Purified from goat serum by ammonium sulphate precipitation followed by antigen affinity chromatography using the immunizing peptide.

<b>Shipping Instructions</b>	Refrigerated
<b>Predicted Species</b>	Human
<b>Reactive Species</b>	Human
<b>Human Gene ID</b>	1374
<b>Product Grade</b>	<a href="https://prod-vector-labs-pimcore-assets.s3.us-east-1.amazonaws.com/assets/products/image/elite_medium.png">https://prod-vector-labs-pimcore-assets.s3.us-east-1.amazonaws.com/assets/products/image/elite_medium.png</a>
<b>IHC Results</b>	Paraffin embedded Human Liver. Recommended concentration: 5-7µg/ml.
<b>ELISA</b>	
<b>Detection Limit</b>	Antibody detection limit dilution 1:128000.
<b>Western Blot</b>	Approx 80-85kDa band observed in lysates of cell line MCF7 (calculated MW of 86.2kDa according to NP_001027017.1). Recommended concentration: 1-3µg/ml. Primary incubation 1 hour at room temperature.
<b>Application Type</b>	Pep-ELISA, WB, IHC

## DOCUMENTS

- [Data Sheet](#)

## GALLERY IMAGES

