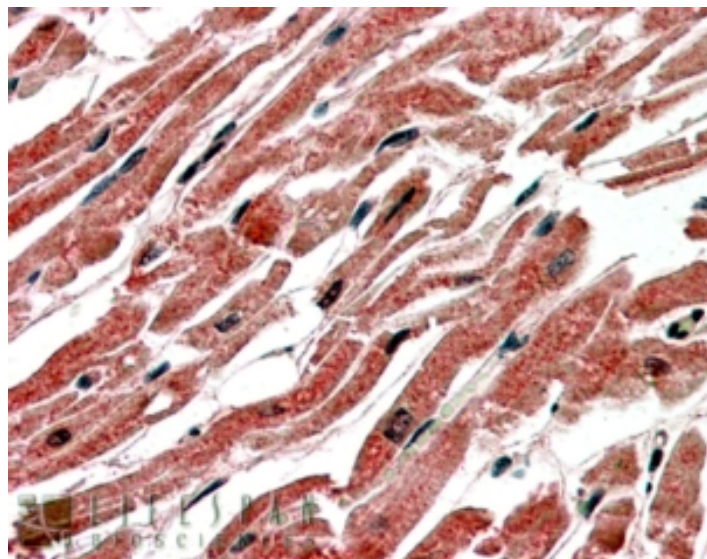


GOAT ANTI-CPT1B (ISOFORM 1) ANTIBODY

SKU: EB05488



SPECIFICATIONS

Formulation Supplied at 0.5 mg/ml in Tris saline, 0.02% sodium azide, pH7.3 with 0.5% bovine serum albumin.

Unit Size 100 µg

Storage Instructions Aliquot and store at -20°C. Minimize freezing and thawing.

Synonym / Alias Names carnitine palmitoyltransferase I-like|MCPT1|MCCPT1|FLJ58750|FLJ55729|CPT1M|carnitine palmitoyltransferase 1B (muscle)|carnitine palmitoyltransferase 1B|carnitine palmitoyltransferase 1A (muscle)|carnitine O-palmitoyltransferase I, mitochondrial muscle isoform|CPTI, muscle|KIAA1670|M-CPT1|CPT1-M|carnitine palmitoyltransferase 1B (muscle)|carnitine palmitoyltransferase I, muscle|CPT1B

Accession ID NP_689452.1; NP_689451.1; NP_004368.1; NP_001138609.1; NP_001138607.1; NP_001138606.1; NP_001138608.1

Blocking Peptide EBP05488

Immunogen Peptide with sequence C-DIADLFQVPKAYS, from the C Terminus of the protein sequence according to NP_689452.1; NP_689451.1; NP_004368.1; NP_001138609.1; NP_001138607.1; NP_001138606.1; NP_001138608.1.

Product Comments This antibody is expected to recognise human isoforms a (NP_689452.1; NP_689451.1; NP_004368.1; NP_001138609.1; NP_001138607.1), isoform c (NP_001138606.1) and isoform d (NP_001138608.1).

Peptide Sequence C-DIADLFQVPKAYS

Purification Method	Purified from goat serum by ammonium sulphate precipitation followed by antigen affinity chromatography using the immunizing peptide.
Shipping Instructions	Refrigerated
Predicted Species	Human
Reactive Species	Human
Human Gene ID	1375
Product Grade	https://prod-vector-labs-pimcore-assets.s3.us-east-1.amazonaws.com/assets/products/image/elite_medium.png
IHC Results	In paraffin embedded Human Heart shows staining of myocardial fibres in longitudinal section. Recommended concentration, 3-5µg/ml.
ELISA Detection Limit	Antibody detection limit dilution 1:16000.
Western Blot	Preliminary experiments gave no signal but low background in human kidney and HepG2 lysates at up to 1µg/ml. We would appreciate any feedback from people in the field - have any results been reported with other antibodies/lysates?
Application Type	Pep-ELISA, IHC

DOCUMENTS

- [Data Sheet](#)

GALLERY IMAGES

