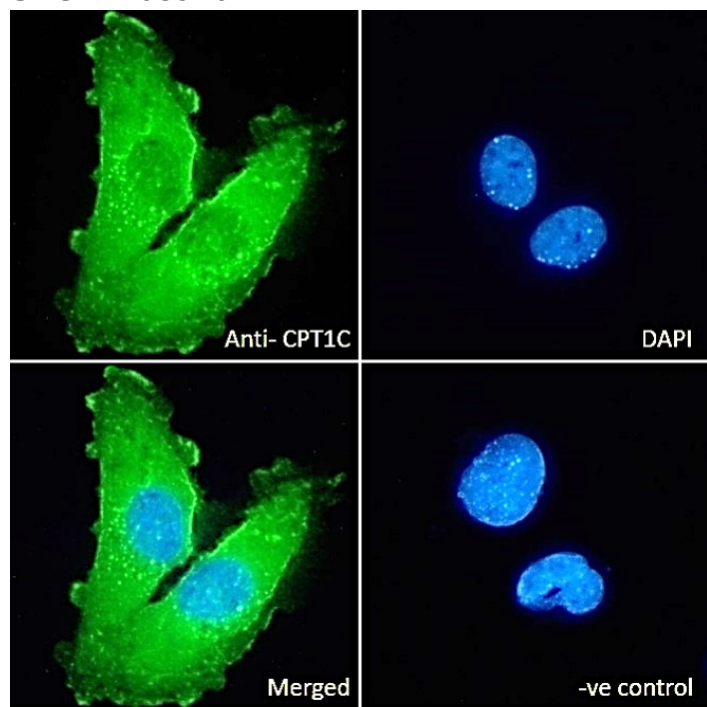


GOAT ANTI-CPT1C ANTIBODY

SKU: EB08926



SPECIFICATIONS

Formulation Supplied at 0.5 mg/ml in Tris saline, 0.02% sodium azide, pH7.3 with 0.5% bovine serum albumin.

Unit Size 100 µg

Storage Instructions Aliquot and store at -20°C. Minimize freezing and thawing.

Synonym / Alias Names carnitine palmitoyltransferase I related C|carnitine acyltransferase-like protein 1|CPT1-like pseudogene|FLJ23809|CPTIC|CPT1P|CATL1|carnitine palmitoyltransferase 1C|CPT1C

Usage Summary Immunofluorescence: Strong expression of the protein seen in the plasma membrane and cytoplasm of U251cells. Recommended concentration: 10µg/ml.

Accession ID NP_689572.1; NP_001129524.1

Blocking Peptide EBP08926

Immunogen Peptide with sequence C-KSSTKTDSHRLGQH, from the internal region of the protein sequence according to NP_689572.1; NP_001129524.1.

Product	This antibody is expected to recognise both reported isoforms (NP_689572.1; NP_001129524.1). Reported
Comments	variants represent identical protein (NP_001186681.1; NP_001186682.1; NP_689572.1).
Peptide Sequence	C-KSSTKTDSHRLGQH
Purification Method	Purified from goat serum by ammonium sulphate precipitation followed by antigen affinity chromatography using the immunizing peptide.
Shipping Instructions	Refrigerated
Predicted Species	Human, Mouse, Rat, Dog, Pig, Cow
Reactive Species	Human
Human Gene ID	126129
Product Grade	https://prod-vector-labs-pimcore-assets.s3.us-east-1.amazonaws.com/assets/products/image/elite_medium.png
ELISA Detection Limit	Antibody detection limit dilution 1:128000.
Application Type	Pep-ELISA, IF

DOCUMENTS

- [Data Sheet](#)

GALLERY IMAGES

