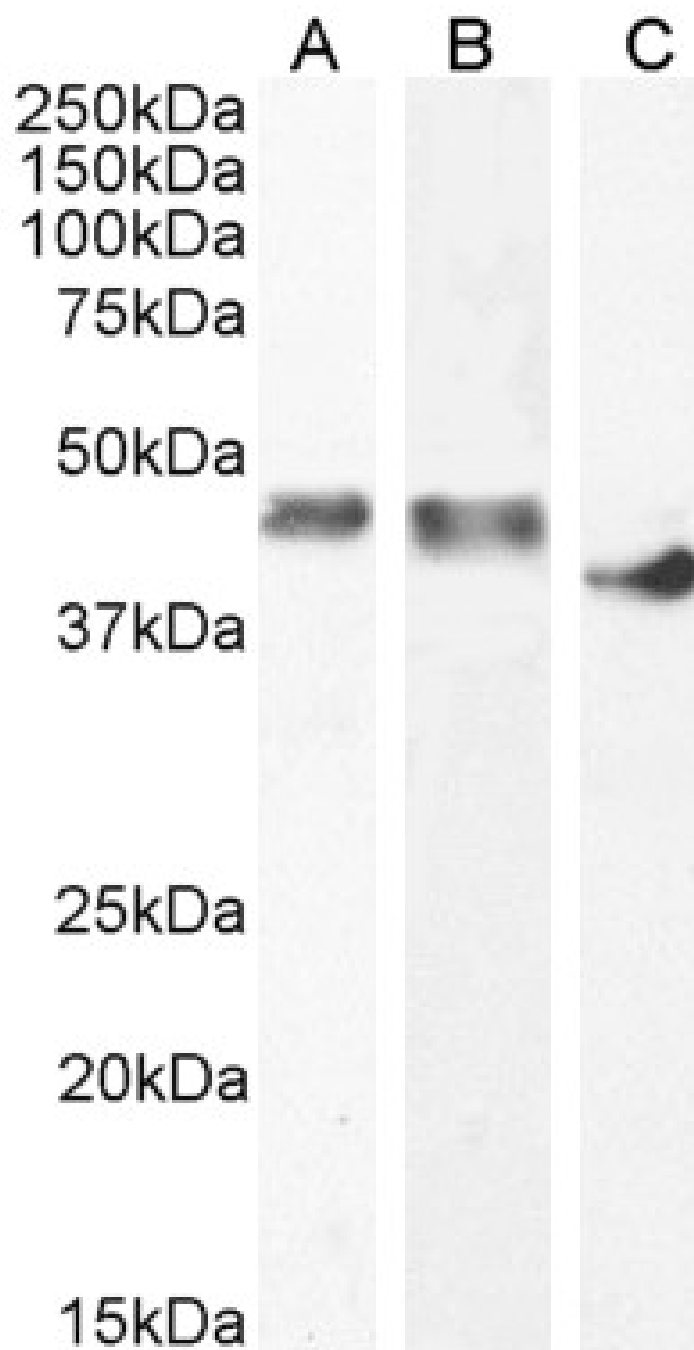


GOAT ANTI-CREATINE KINASE M-TYPE (AA258-270) ANTIBODY

SKU: EB11997



SPECIFICATIONS

Formulation Supplied at 0.5 mg/ml in Tris saline, 0.02% sodium azide, pH7.3 with 0.5% bovine serum albumin.

Unit Size 100 µg

Storage Instructions Aliquot and store at -20°C. Minimize freezing and thawing.

Synonym /

Alias Names creatine kinase-M|creatine kinase M-type|creatine kinase M chain|M-CK|CKMM|creatine kinase, muscle|CKM

Accession ID NP_001815.2

Blocking Peptide EBP11997

Immunogen Peptide with sequence C-QKIEEIFKKAGHP, from the internal region of the protein sequence according to NP_001815.2.

Peptide Sequence C-QKIEEIFKKAGHP

Purification Method Purified from goat serum by ammonium sulphate precipitation followed by antigen affinity chromatography using the immunizing peptide.

Shipping Instructions Refrigerated

Predicted Species Human, Mouse, Rat, Dog, Pig, Cow

Reactive Species Human, Rat, Pig

Human Gene ID 1158

Mouse Gene ID 12715

Rat Gene ID 24265

Product Grade https://prod-vector-labs-pimcore-assets.s3.us-east-1.amazonaws.com/assets/products/image/elite_medium.png

ELISA

Detection Limit Antibody detection limit dilution 1:8000.

Western Blot Approx 45kDa band observed in Human and Pig Heart lysates, and approx 40kDa in Rat Heart lysates (calculated MW of 43.1kDa according to Human NP_001815.2 and 43kDa according to Rat NP_036662.1 and Pig NP_001123421.1). Recommended concentration: 0.1-0.3µg/ml. Primary incubation 1 hour at room temperature.

Application Type Pep-ELISA, WB

DOCUMENTS

- [Data Sheet](#)

GALLERY IMAGES

