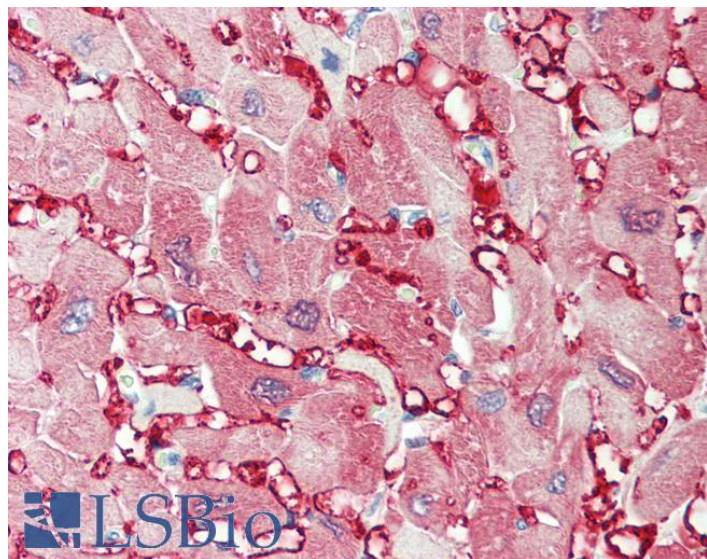


GOAT ANTI-CREATINE KINASE M-TYPE ANTIBODY

SKU: EB11996



SPECIFICATIONS

Formulation Supplied at 0.5 mg/ml in Tris saline, 0.02% sodium azide, pH7.3 with 0.5% bovine serum albumin.

Unit Size 100 µg

Storage Instructions Aliquot and store at -20°C. Minimize freezing and thawing.

Synonym /

Alias Names creatine kinase-M|creatine kinase M-type|creatine kinase M chain|M-CK|CKMM|creatine kinase, muscle|CKM

Accession ID NP_001815.2

Blocking Peptide EBP11996

Immunogen Peptide with sequence NTHNKFKLNYKPEE-C, from the N Terminus of the protein sequence according to NP_001815.2.

Peptide Sequence NTHNKFKLNYKPEE-C

Purification Method Purified from goat serum by ammonium sulphate precipitation followed by antigen affinity chromatography using the immunizing peptide.

Shipping Instructions Refrigerated

Predicted Species	Human, Mouse, Dog
Reactive Species	Human, Mouse
Human Gene ID	1158
Product Grade	https://prod-vector-labs-pimcore-assets.s3.us-east-1.amazonaws.com/assets/products/image/elite_medium.png
IHC Results	Paraffin embedded Human Heart. Recommended concentration: 5µg/ml.
ELISA Detection Limit	Antibody detection limit dilution 1:128000.
Western Blot	Approx 45kDa band observed in Human and Mouse Skeletal Muscle and Heart lysates (calculated MW of 43.1kDa according to NP_001815.2). Recommended concentration: 0.01-0.03µg/ml. Primary incubation was 1 hour.
Application Type	Pep-ELISA, WB, IHC

DOCUMENTS

- [Data Sheet](#)

GALLERY IMAGES

